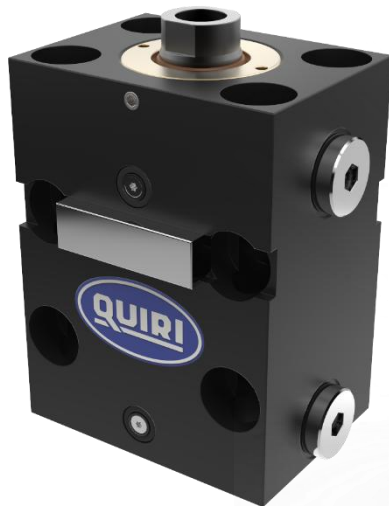




HYDRAULIC BLOC CYLINDERS MANIFOLD BLOC CYLINDERS

QUIRI - All the expertise of 150 years





Category Hydraulic block cylinders BDL

Category Hydraulic block cylinders BDA

Category Hydraulic block cylinders S48

Category Hydraulic block cylinders BDE

Category Double acting hydraulic cylinders HVB

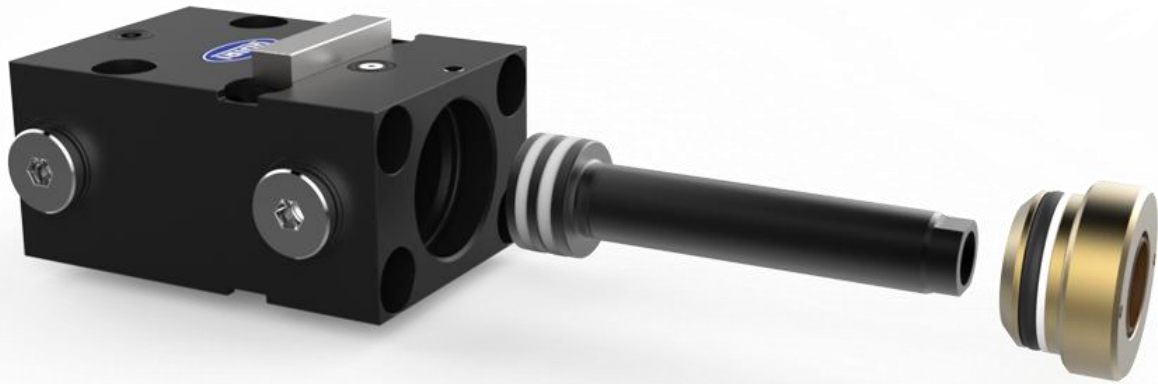


Hydraulic block cylinders BDL

Catégorie

BDL type A Hydraulic block cylinders - BDL type A

BDL type R Hydraulic block cylinders - BDL type R



Designation of BDL

Designation example >>>

							BDL	25	50	R	T
TYPE											
Ø BORE (mm)											
16	25	32	40	50	63		25				
STROKES (mm)											
See strokes tables									50		
FEEDING											
Axial - Feeding parallel to rod										A	
Radial - Feeding perpendicular to rod										R	
ROD TIP											
Tapped											T
Threaded											F
Coupling											Te

Example of designation : BDL 25 - 50 R T

BDL block cylinder 25 mm bore, 50 mm stroke, RADIAL - feeds perpendicular to rod, tapped rod.

Basic strokes



Guide : Hydraulic block cylinder BDL

Guide

Basic strokes (mm)						
Fixing	BDL 16	BDL 25	BDL 32	BDL 40	BDL 50	BDL 63
Smooth	16	20	25	25	25	30
	50	50	50	50	50	63
	75	75	75	75	75	75
	100	100	100	100	100	100
Tapped	125	125	125	125	125	125
	160	160	160	160	160	160
	175	175	175	175	175	175
	200	200	200	200	200	200

Hydraulic block cylinders BDL

Available strokes

Available strokes (mm)						
Fixing	BDL 16	BDL 25	BDL 32	BDL 40	BDL 50	BDL 63
Smooth	5	5	5	5	5	5
	10	10	10	10	10	10
	16	15	15	15	15	15
	20	20	20	20	20	20
	25	25	25	25	25	25
	30	30	30	30	30	30
	35	35	35	35	35	35
	40	40	40	40	40	40
	45	45	45	45	45	45
	50	50	50	50	50	50
	55	55	55	55	55	50
	60	60	60	60	60	63
	65	65	65	65	65	65
	70	70	70	70	70	70
	75	75	75	75	75	75
	80	80	80	80	80	80
	85	85	85	85	85	85
	90	90	90	90	90	90
	95	95	95	95	95	95
100	100	100	100	100	100	



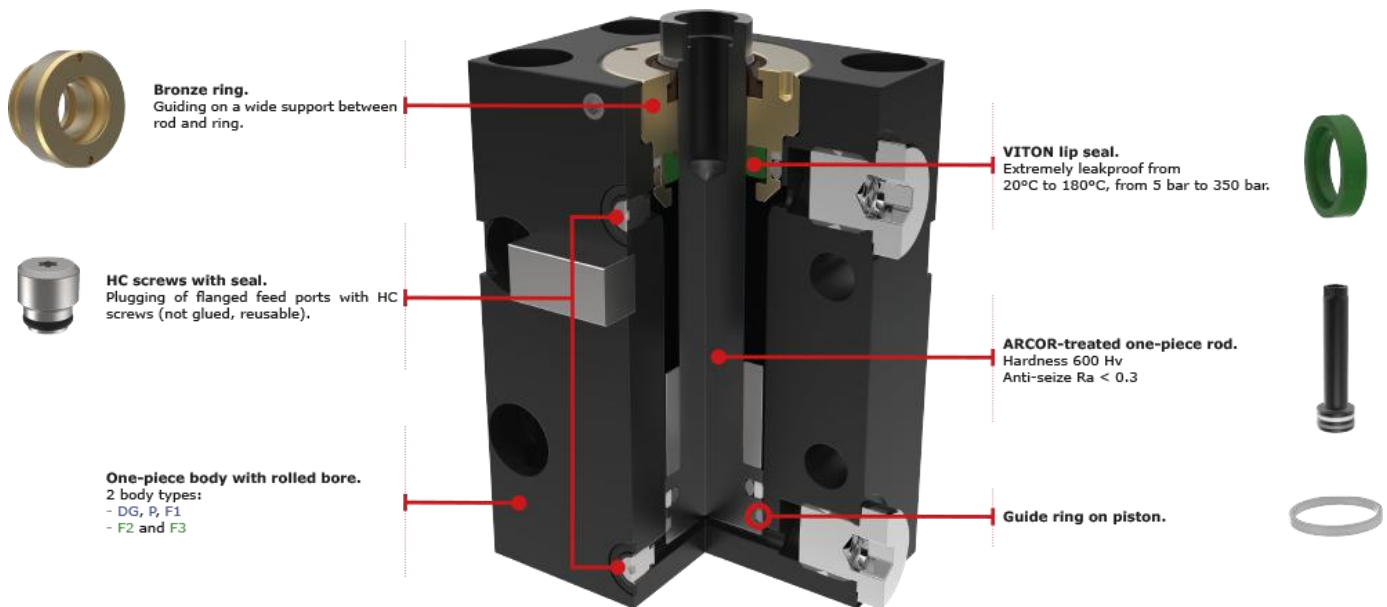
Guide : Hydraulic block cylinder BDL

Guide

Tapped	105	105	105	105	105	105
	110	110	110	110	110	110
	115	115	115	115	115	115
	120	120	120	120	120	120
	125	125	125	125	125	125
	130	130	130	130	130	130
	135	135	135	135	135	135
	140	140	140	140	140	140
	145	145	145	145	145	145
	150	150	150	150	150	150
	155	155	155	155	155	155
	160	160	160	160	160	160
	165	165	165	165	165	165
	170	170	170	170	170	170
	175	175	175	175	175	175
	180	180	180	180	180	180
	185	185	185	185	185	185
	190	190	190	190	190	190
	195	195	195	195	195	195
	200	200	200	200	200	200

Hydraulic block cylinders BDL

Conception





Hydraulic block cylinders - BDL type A

Testing pressure: 500 bar
Maximum operating pressure: 350 bar
Maximum flow rate: 6 l/min

Flanged connections on the front and rear sides. (interchangeable with BDD F2 and F3 type)
Mounting holes with counterbores parallel to the rod. (Tapped holes on the parallel counterbores for the strokes until 125 mm)
Cylinder equipped with VITON lip seals for continuous use between -20°C and 180°C. (Optional seal +250°C available)
Minimum operating pressure = 10 bar
Pneumatically usable.

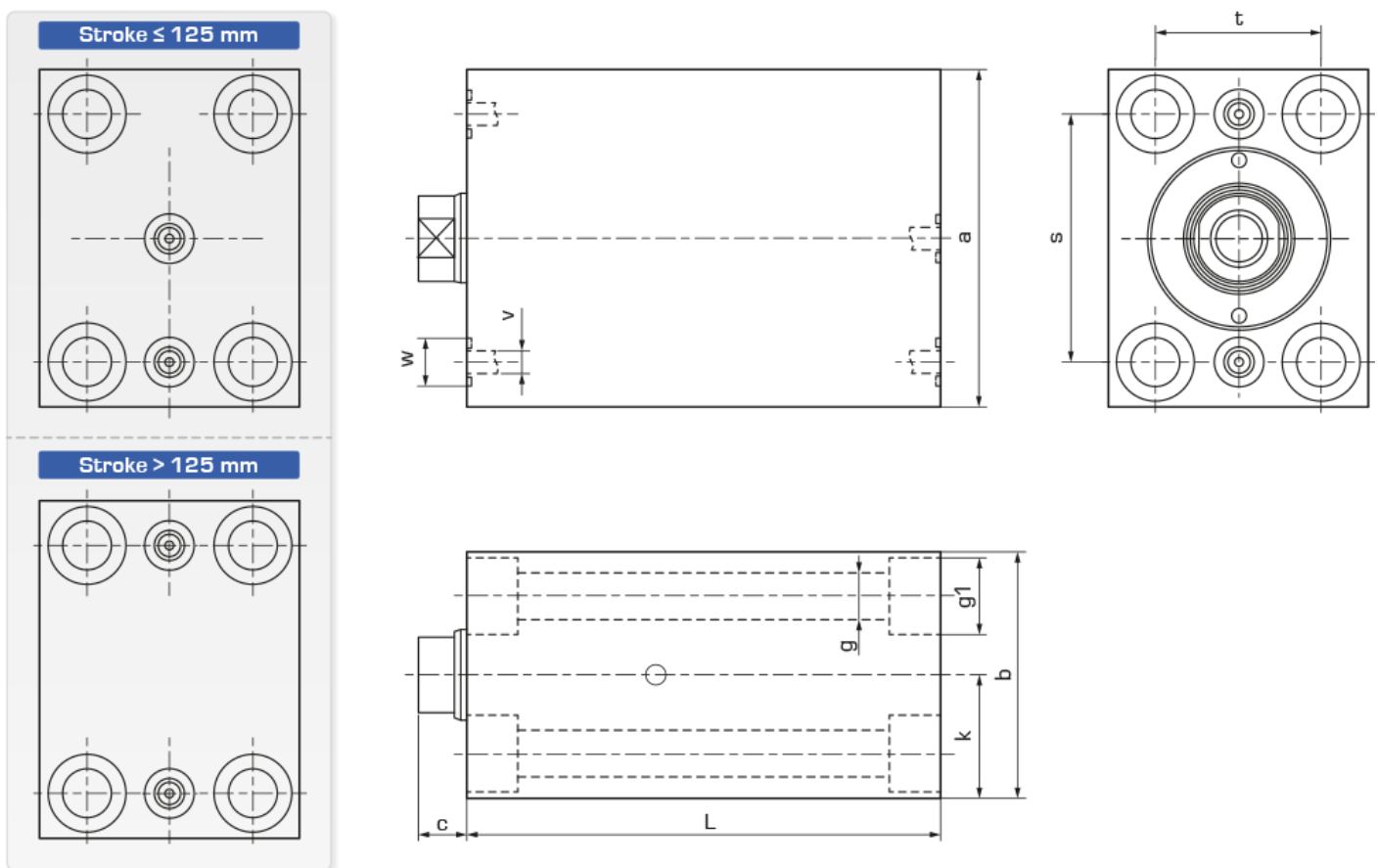


Hydraulic block cylinders BDL

Seal kits available in stock.
Guide ring equipped with seals in stock.
Rod equipped with seals in stock.

Features

Reinforced piston rod guide, brass guide ring allowing radial forces at the rod end (clamping applications, contact point offset from the rod axis, etc.)
Reinforced piston guide with guide strip
One-piece rolled body
One-piece piston rod with sulfonitriding treatment (ARCOR) Standard strokes can be reduced with internal spacers (every 5 mm) Stroke +/- 0.3mm
2-year or 600 km warranty (6 million cycles for a 50 mm stroke)
Cylinders delivered with all supply ports plugged



Note : When considering the overall dimensions, take into account the height of the screw heads used to plug the threaded supply ports on the side.
Headless plugs are available upon request.



Hydraulic block cylinders - BDL type A

Testing pressure: 500 bar

Maximum operating pressure: 350 bar

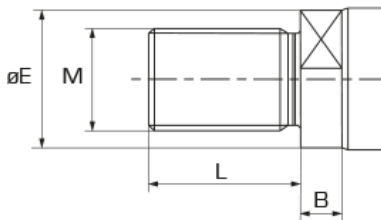
Maximum flow rate: 6 l/min

TYPE	Unit	BDL 16	BDL 25	BDL 32	BDL 40	BDL 50	BDL 63
Piston Ø	(mm)	16	25	32	40	50	63
Rod Ø	(mm)	10	16	20	25	32	40
Pushing force at 100 bars	(kN)	2	4.9	8	12.6	19.6	31.2
Pulling force at 100 bars	(kN)	1.2	2.9	4.9	7.7	11.6	18.6
a	(mm)	60	65	75	85	100	125
b	(mm)	35	45	55	63	75	95
c	(mm)	6	7	10	10	10	14
g	(mm)	6.5	8.5	10.5	10.5	13	17
g1 x depth	(mm)	10 x 1.5	14 x 9	17 x 11	17 x 11	20 x 13	25 x 17
s	(mm)	40	50	55	63	76	95
t	(mm)	22	30	35	40	45	65
TA		M8 x 12	M8 x 12	M10 x 15	M10 x 15	M12 x 18	M16 x 24
k	(mm)	17.5	22.5	27.5	31.5	37.5	47.5
v	(mm)	5	5	5	5	5	5
w	(mm)	10.5	10.5	10.5	10.5	10.5	10.5
Dimension dependent on base stroke							
L	(mm)	+40	+44	+50	+54	+65	+85

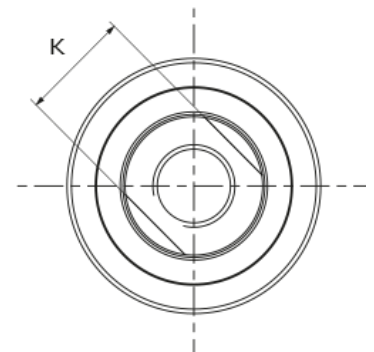
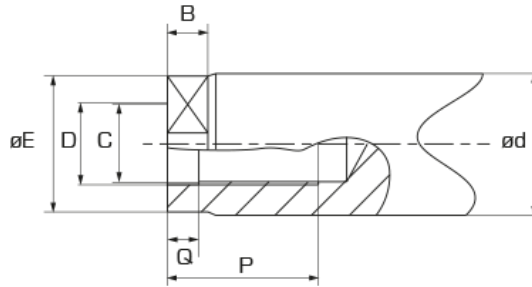
Hydraulic block cylinders BDL

Rod end

Type F



Type T



TYPE	Unit	BDL 16	BDL 25	BDL 32	BDL 40	BDL 50	BDL 63
Ød	(mm)	10	16	20	25	32	40
B	(mm)	4.5	5.8	7.5	8.5	9	12.2
C		M6 x 1	M10 x 1.5	M12 x 1.75	M16 x 2	M20 x 2.5	M27 x 3
D	(mm)	6.3	10.5	12.5	16.5	21	28
ØE	(mm)	9.2	15.2	19	24	31	39
K	(mm)	8	13	17	22	27	36
P	(mm)	15	18	18	25	30	40
Q	(mm)	3	4	4	7	7	10
L	(mm)	14	18	22	28	36	45
M		M8 x 1	M14 x 1.5	M16 x 1.5	M20 x 1.5	M27 x 2	M33 x 2

Te Type rod end :

Rod supplied with coupling screw for BDL cylinders (also available as accessory).



Hydraulic Block Cylinders - BDL type R

Testing pressure : 500 bar
Maximum operating pressure : 350 bar
Maximum flow rate : 6 l/min

Pipes connections on the side. (interchangeable with BDD DG and P type) Flanged connections on the bottom. (interchangeable with BDD F1 type)
Mounting holes with counterbores perpendicular and parallel to the rod. (Tapped holes on the parallel counterbores for the strokes until 125 mm)
Positioning keys on both sides allow for right- or left-hand pipes connections.
Cylinder equipped with VITON lip seals for continuous use between -20°C and 180°C. (Optional seal +250°C available)
Minimum operating pressure = 10 bar
Pneumatically usable.

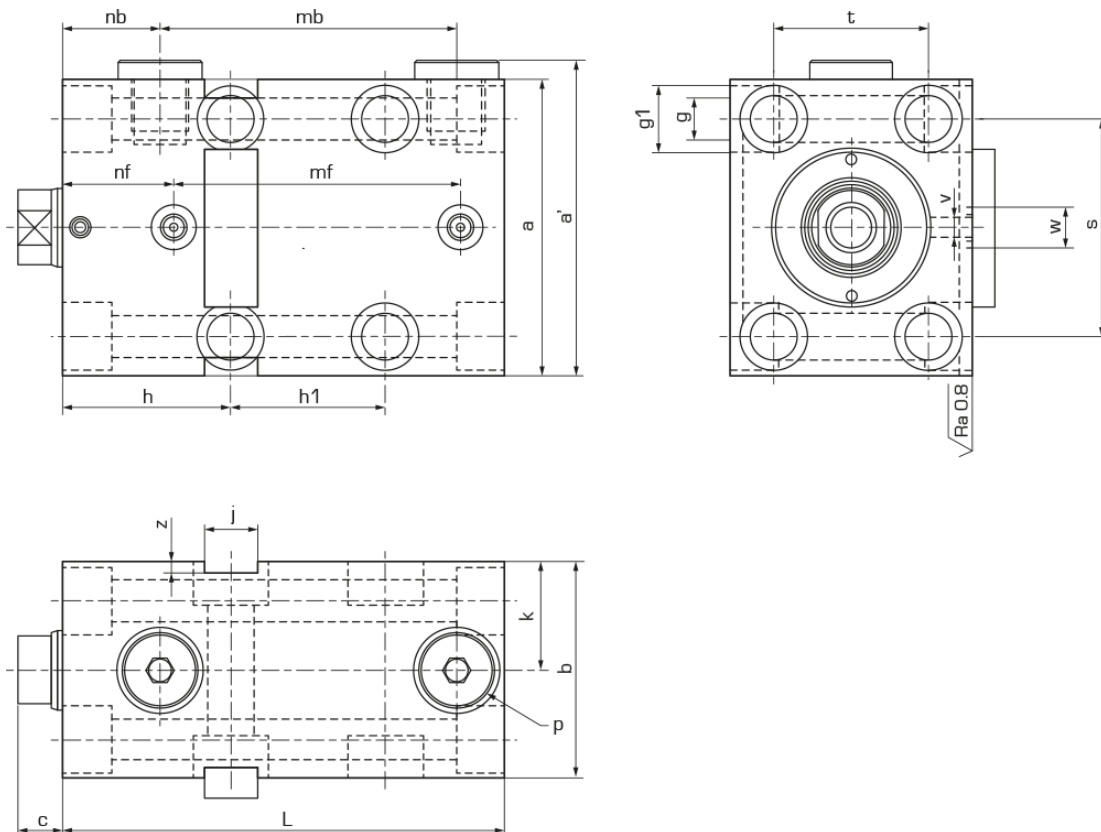


Hydraulic block cylinders BDL

Key included.
Seal kits available in stock.
Guide ring equipped with seals in stock.
Rod equipped with seals in stock.

Features

Reinforced piston rod guide, brass guide ring allowing radial forces at the rod end (clamping applications, contact point offset from the rod axis, etc.)
Reinforced piston guide with guide strip
One-piece rolled body
One-piece piston rod with sulfonitriding treatment (ARCOR) Standard strokes can be reduced with internal spacers (every 5 mm) Stroke +/- 0.3 mm
2-year or 600 km warranty (6 million cycles for a 50 mm stroke)
Cylinders delivered with all supply ports plugged



Note : When considering the overall dimensions, take into account the height of the screw heads used to plug the threaded supply



Hydraulic Block Cylinders - BDL type R

Testing pressure : 500 bar
 Maximum operating pressure : 350 bar
 Maximum flow rate : 6 l/min

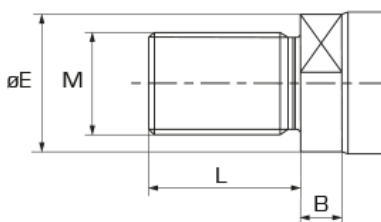
ports on the side.
 Headless plugs are available upon request.

TYPE	Unit	BDL 16	BDL 25	BDL 32	BDL 40	BDL 50	BDL 63
Piston Ø	(mm)	16	25	32	40	50	63
Rod Ø	(mm)	10	16	20	25	32	40
Pushing force at 100 bars	(kN)	2	4.9	8	12.6	19.6	31.2
Pulling force at 100 bars	(kN)	1.2	2.9	4.9	7.7	11.6	18.6
a	(mm)	60	65	75	85	100	125
a'	(mm)	64.75	69.75	79.75	89.75	104.75	129.75
b	(mm)	35	45	55	63	76	95
c	(mm)	6	7	10	10	10	14
f	(mm)	30	50	55	63	76	95
g	(mm)	6.5	8.5	10.5	10.5	13	17
g1 x depth	(mm)	10 x 1.5	14 x 9	17 x 11	17 x 11	20 x 13	25 x 17
h	(mm)	30	33	38	40	44	50
s	(mm)	40	50	55	63	76	95
t	(mm)	22	30	35	40	45	65
TA		M8 x 12	M8 x 12	M10 x 15	M10 x 15	M12 x 18	M16 x 24
j (H8)	(mm)	8	10	12	12	16	20
k	(mm)	17.5	22.5	27.5	31.5	37.5	47.5
nb	(mm)	16.5	18	22	24	27	26
p		G1/4	G1/4	G1/4	G1/4	G1/4	G1/2
nf	(mm)	20.5	21	25	27	29.5	32
v	(mm)	5	5	5	5	5	5
w	(mm)	10.5	10.5	10.5	10.5	10.5	10.5
z	(mm)	2	2	3	4	5	6
z' (+0.1 / 0)	(mm)	4	6	5	4	5	6
Dimension dependent on base stroke							
L	(mm)	+40	+44	+50	+54	+65	+85
mb	(mm)	+12.5	+15	+17	+19	+25	+42
mf	(mm)	+12.5	+15.5	+15	+17	+23	+37
Stroke	(mm)	>16	>20	>25	>25	>25	>30
h1	(mm)	-13.5	-15	-15	-13	-9	-6

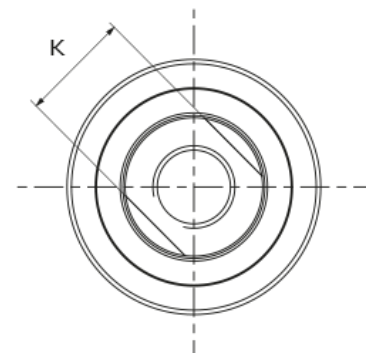
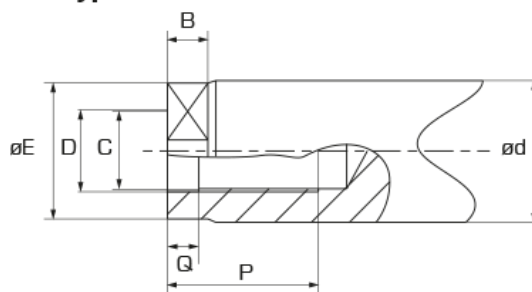
Hydraulic block cylinders BDL

Rod end

Type F



Type T





Hydraulic Block Cylinders - BDL type R

Testing pressure : 500 bar

Maximum operating pressure : 350 bar

Maximum flow rate : 6 l/min

TYPE	Unit	BDL 16	BDL 25	BDL 32	BDL 40	BDL 50	BDL 63
Ød	(mm)	10	16	20	25	32	40
B	(mm)	4.5	5.8	7.5	8.5	9	12.2
C		M6 x 1	M10 x 1.5	M12 x 1.75	M16 x 2	M20 x 2.5	M27 x 3
D	(mm)	6.3	10.5	12.5	16.5	21	28
ØE	(mm)	9.2	15.2	19	24	31	39
K	(mm)	8	13	17	22	27	36
P	(mm)	15	18	18	25	30	40
Q	(mm)	3	4	4	7	7	10
L	(mm)	14	18	22	28	36	45
M		M8 x 1	M14 x 1.5	M16 x 1.5	M20 x 1.5	M27 x 2	M33 x 2

Hydraulic block
cylinders BDL

Te Type rod end :

Rod supplied with coupling screw for BDL cylinders (also available as accessory).



Hydraulic block cylinders BDA

Catégorie

BDA Std Hydraulic block cylinders - BDA Std

BDA F1 Hydraulic block cylinders - BDA F1 Type

BDA F2 Hydraulic block cylinders - BDA F2 Type

BDA F3 Hydraulic block cylinders - BDA F3 Type

Hydraulic block
cylinders BDL

Designation of BDA

Example of designation >>>						BDA	100	25	V	F1	T
TYPE											
Aluminium body						BDA					
Ø (mm)											
25	32	40	50	63							
SIZE											
25	40	65	100	160		100					
STROKES (mm)											
Standard strokes (20 to 200 mm)								25			
SEALS											
Nitrile seals <100°C									-		
Viton® seals <150°C									V		
FIXING / FEEDING											
Perpendicular or parallel fixation holes Tapped port										-	
Cross fixing holes Feeding at the bottom										F1	
Axial fixing holes Feeding at the front										F2	
Axial fixing holes Feeding at the rear										F3	
ROD ENDS											
Tapped											T
Threaded											F

Order code example: BDA 100 - 25 V F1 T

Block cylinder, double effect, aluminium body, diameter 50mm, stroke 25 mm, Viton seals, feeding on the bottom, tapped rod.



Hydraulic block cylinders : BDA Std

Test pressure: 500 bars
Max working pressure: 350 bars

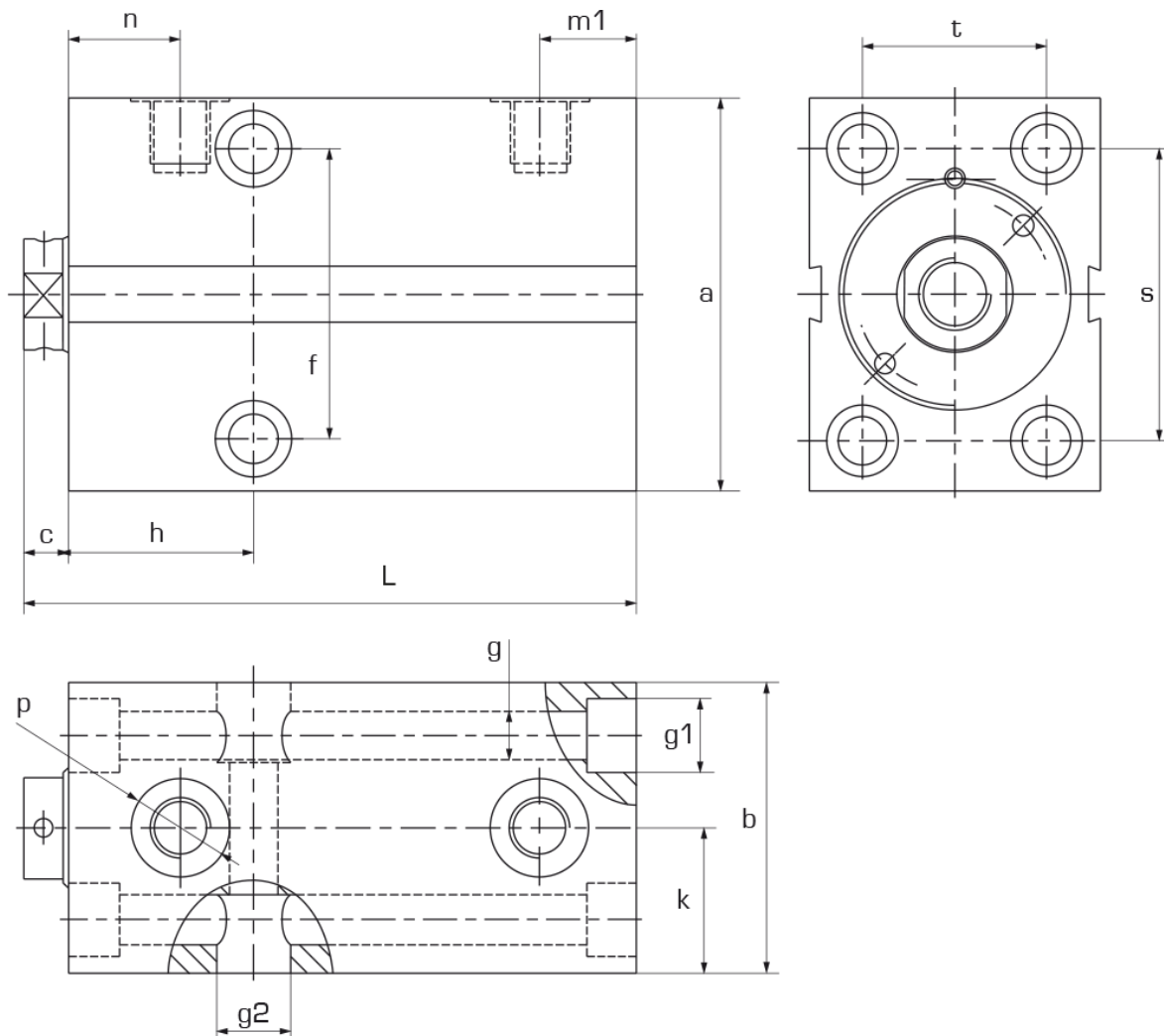
Tapped ports.
Fixture perpendicular or parallel to the rod with counterbores.
Seal kits are available on stock
For strokes ≥ 160 mm, there are 4 tapped holes per face instead of 4 smooth holes

Characteristics

- Magnetic detection of the piston
- Double sealing of the rod
- Solid body with burnished bore
- Solid piston rod with treated steel
- Strokes precision $\pm 0,3$ mm
- The key is provided
- Don't use BDA in temperatures over 115°C (239°F)
- Sensor must be at distance of 30 mm from any metallic surface.



Hydraulic block cylinders BDA





Hydraulic block cylinders : BDA Std

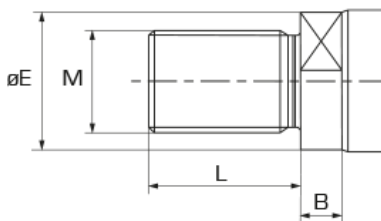
Test pressure: 500 bars
Max working pressure: 350 bars

Hydraulic block cylinders BDA

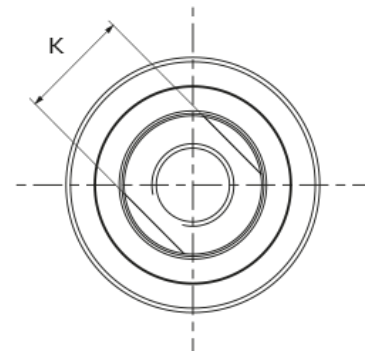
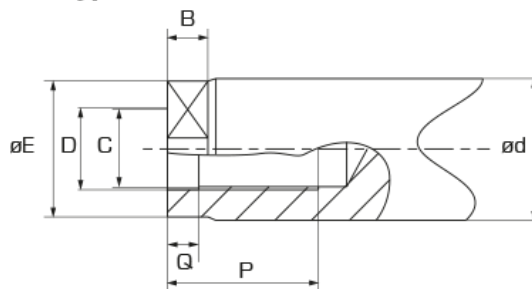
TYPE	Units	BDA 25	BDA 40	BDA 65	BDA 100	BDA 160
Piston ø	(mm)	25	32	40	50	63
Rod ø	(mm)	16	20	25	32	40
Pushing force at 100 bars	(kN)	4.9	8.0	12.5	19.6	31.1
Pulling force at 100 bars	(kN)	2.9	4.9	7.7	11.6	18.6
a	(mm)	65	75	85	100	125
b	(mm)	45	55	63	75	95
c	(mm)	7	10	10	10	14
f	(mm)	50	55	63	76	95
g	(mm)	8.5	10.5	10.5	13	17
g1 x depth	(mm)	ø14 x 9	ø17 x 11	ø17 x 11	ø19 x 13	ø25 x 17
g2 x depth	(mm)	ø14 x 12	ø17 x 16	ø17 x 17	ø19 x 22	ø25 x 24
h	(mm)	33	38	40	44	50
k	(mm)	22.5	27.5	31.5	37.5	47.5
m1	(mm)	18	20	21	21	26
n	(mm)	18	22	24	27	26
p		G1/4	G1/4	G1/4	G1/4	G1/2
s	(mm)	50	55	63	76	95
Stroke	(mm)	20	25	25	25	30
Total length (L)	(mm)	85	100	106	117	135
Stroke	(mm)	50	50	50	50	63
Total length (L)	(mm)	115	125	131	142	168
Stroke	(mm)	100	100	100	100	100
Total length (L)	(mm)	165	175	181	192	205
Stroke	(mm)	160	160	160	160	160
Total length (L)	(mm)	228	238	244	255	269
Tapped x depth	(mm)	M8 x 12	M10 x 15	M10 x 15	M12 x 18	M16 x 24
Stroke	(mm)	200	200	200	200	200
Total length (L)	(mm)	268	278	284	295	309
Tapped x depth	(mm)	-	M10 x 15	M10 x 15	M12 x 18	M16 x 24

Rod ends

Type F



Type T





Hydraulic block cylinders : BDA Std

Test pressure: 500 bars
Max working pressure: 350 bars

TYPE	Units	BDE 25	BDE 32	BDE 40	BDE 50	BDE 63	BDE 80	BDE 100	BDE 125
ed	(mm)	16	20	25	32	40	50	63	80
B	(mm)	5.8	7.5	8.5	9	12.2	12	12	13
C	(mm)	M10 x 1.5	M12 x 1.75	M16 x 2	M20 x 2.5	M27 x 3	M30 x 3.5	M42 x 4.5	M48 x 5
øD	(mm)	10.5	12.5	16.5	21	28	31	43	49
øE	(mm)	15.2	19	24	31	39	49	61.5	78
K	(mm)	13	17	22	27	36	46	55	70
L	(mm)	18	22	28	36	45	52	60	64
M	(mm)	M14 x 1.5	M16 x 1.5	M20 x 1.5	M27 x 2	M33 x 2	M39 x 2	M45 x 2	M52 x 2
P	(mm)	18	18	25	30	40	40	60	70
Q	(mm)	4	4	7	7	10	10	10	10

Hydraulic block cylinders BDA



Hydraulic block cylinders : BDA F1 Type

Test pressure: 500 bars
Max working pressure: 350 bars

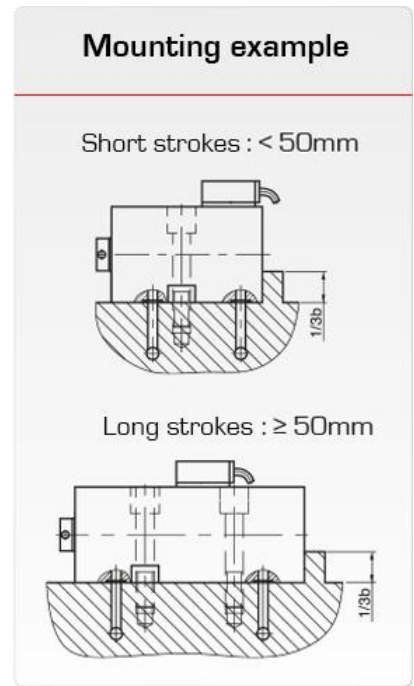
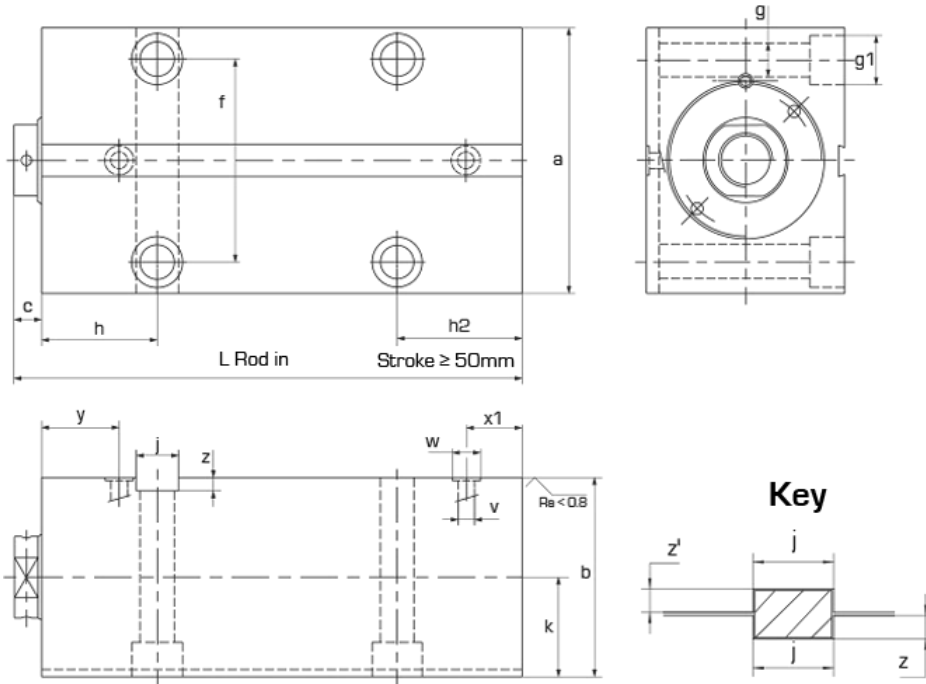
Feeding holes at the bottom.
Fixture perpendicular to the rod with counterbores.
Key provided
Seals kits are available on stock

Characteristics

Magnetic detection of the piston
Double sealing of the rod
Solid body with burnished bore
Solid piston rod with treated steel
Strokes precision $\pm 0,3\text{mm}$
The key is provided
Don't use BDA in temperatures over 115°C (239°F)
Sensor must be at distance of 30 mm from any metallic surface.



Hydraulic block cylinders BDA



TYPE	Units	BDA 25	BDA 40	BDA 65	BDA 100	BDA 160
Piston ϕ	(mm)	25	32	40	50	63
Rod ϕ	(mm)	16	20	25	32	40
Pushing force at 100 bars	(kN)	4.9	8.0	12.5	19.6	31.1
Pulling force at 100 bars	(kN)	2.9	4.9	7.7	11.6	18.6
a	(mm)	65	75	85	100	125
b	(mm)	45	55	63	75	95
c	(mm)	7	10	10	10	14
f	(mm)	50	55	63	76	95
g	(mm)	8.5	10.5	10.5	13	17
g1 x depth	(mm)	$\phi 14 \times 9$	$\phi 17 \times 11$	$\phi 17 \times 11$	$\phi 19 \times 13$	$\phi 25 \times 17$
h	(mm)	33	38	40	44	50
h2 (Stroke $\geq 50\text{mm}$)	(mm)	40	42	44	47	60
j	(mm)	10	12	12	16	20
k	(mm)	22.5	27.5	31.5	37.5	47.5
v	(mm)	4	5	6	6	8
w x depth	(mm)	9.8×1.1	9.8×1.1	9.8×1.1	10.8×1.1	13.8×1.5



Hydraulic block cylinders : BDA F1 Type

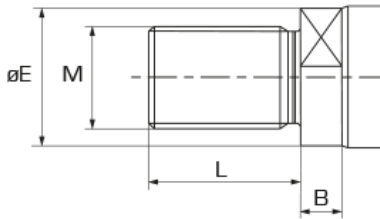
Test pressure: 500 bars
Max working pressure: 350 bars

x1	(mm)	21.5	25	27	30	35
y	(mm)	21	25	27	29.5	32
z	(mm)	2	3	3	5	5
z' (+0.1 0)	(mm)	6	5	5	5	7
Seals dimensions	(mm)	7 x 1.5	7 x 1.5	7 x 1.5	8 x 1.5	10 x 2
Stroke	(mm)	20	25	25	25	30
Total length (L)	(mm)	85	100	106	117	135
Stroke	(mm)	50	50	50	50	63
Total length (L)	(mm)	115	125	131	142	168
Stroke	(mm)	100	100	100	100	100
Total length (L)	(mm)	165	175	181	192	205
Stroke	(mm)	160	160	160	160	160
Total length (L)	(mm)	228	238	244	255	269
Stroke	(mm)	200	200	200	200	200
Total length (L)	(mm)	268	278	284	295	309

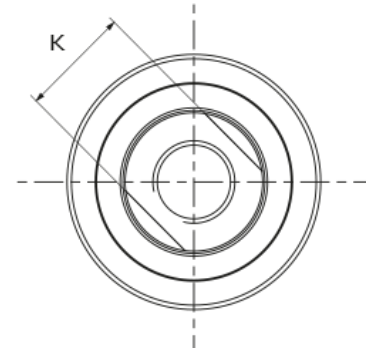
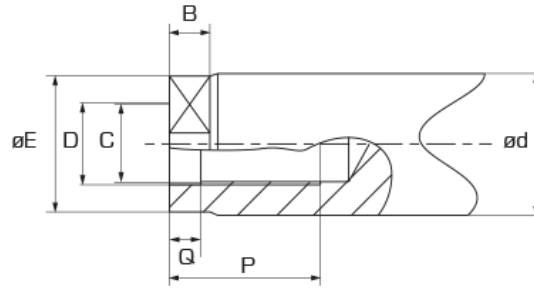
Hydraulic block cylinders BDA

Rod ends

Type F



Type T



TYPE	Units	BDE 25	BDE 32	BDE 40	BDE 50	BDE 63	BDE 80	BDE 100	BDE 125
ød	(mm)	16	20	25	32	40	50	63	80
B	(mm)	5.8	7.5	8.5	9	12.2	12	12	13
C	(mm)	M10 x 1.5	M12 x 1.75	M16 x 2	M20 x 2.5	M27 x 3	M30 x 3.5	M42 x 4.5	M48 x 5
øD	(mm)	10.5	12.5	16.5	21	28	31	43	49
øE	(mm)	15.2	19	24	31	39	49	61.5	78
K	(mm)	13	17	22	27	36	46	55	70
L	(mm)	18	22	28	36	45	52	60	64
M	(mm)	M14 x 1.5	M16 x 1.5	M20 x 1.5	M27 x 2	M33 x 2	M39 x 2	M45 x 2	M52 x 2
P	(mm)	18	18	25	30	40	40	60	70
Q	(mm)	4	4	7	7	10	10	10	10



Hydraulic block cylinders : BDA F2 Type

Test pressure: 500 bars
Max working pressure: 350 bars

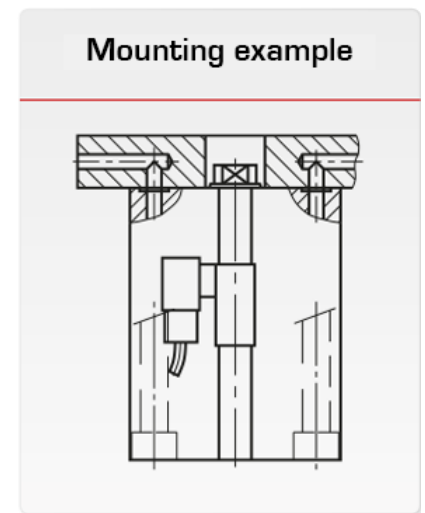
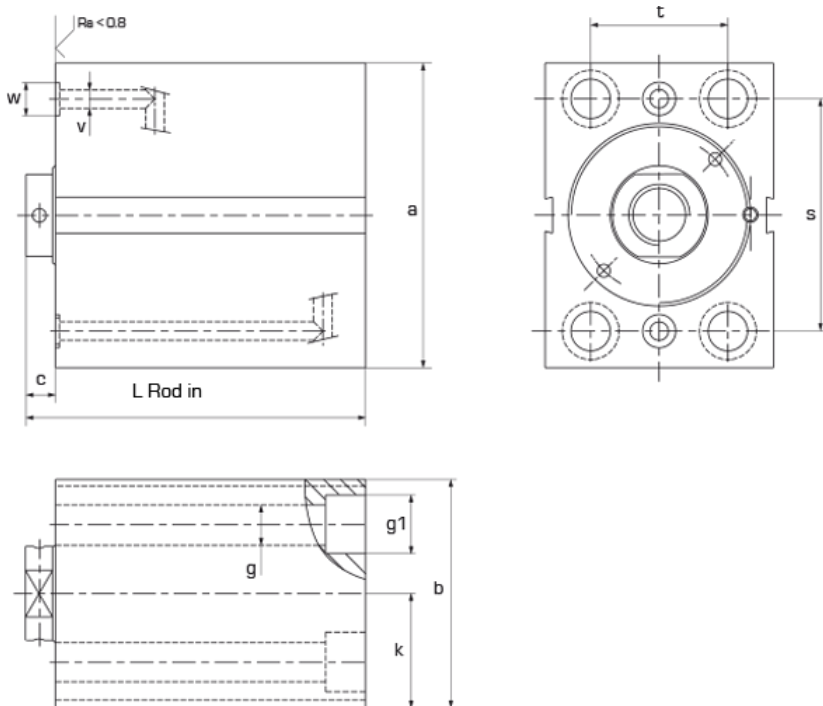
Feeding holes at the front.
Fixture parallel to the rod with counterbores.
Seals kits are available on stock
For strokes ≥ 160 mm, there are 4 tapped holes per side instead of 4 smooth holes

Characteristics

- Magnetic detection of the piston
- Double sealing of the rod
- Solid body with burnished bore
- Solid piston rod with treated steel
- Strokes precision $\pm 0,3$ mm
- The key is provided
- Don't use BDA in temperatures over 115°C (239°F)
- Sensor must be at distance of 30 mm from any metallic surface.



Hydraulic block
cylinders BDA



TYPE	Units	BDA 25	BDA 40	BDA 65	BDA 100	BDA 160
Piston ϕ	(mm)	25	32	40	50	63
Rod ϕ	(mm)	16	20	25	32	40
Pushing force at 100 bars	(kN)	4.9	8.0	12.5	19.6	31.1
Pulling force at 100 bars	(kN)	2.9	4.9	7.7	11.6	18.6
a	(mm)	65	75	85	100	125
b	(mm)	45	55	63	75	95
c	(mm)	7	10	10	10	14
f	(mm)	50	55	63	76	95
g	(mm)	8.5	10.5	10.5	13	17
g1 x depth	(mm)	$\phi 14 \times 9$	$\phi 17 \times 11$	$\phi 17 \times 11$	$\phi 19 \times 13$	$\phi 25 \times 17$
k	(mm)	22.5	27.5	31.5	37.5	47.5
s	(mm)	50	55	63	76	95
t	(mm)	30	35	40	45	65
v	(mm)	4	5	6	6	8
w x depth	(mm)	9.8 x 1.1	9.8 x 1.1	9.8 x 1.1	10.8 x 1.1	13.8 x 1.5



Hydraulic block cylinders : BDA F2 Type

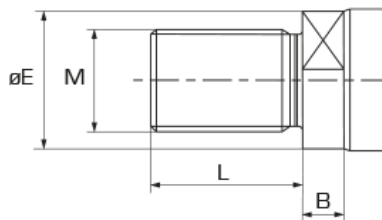
Test pressure: 500 bars
Max working pressure: 350 bars

Seals dimensions	(mm)	7 x 1.5	7 x 1.5	7 x 1.5	8 x 1.5	10 x 2
Stroke	(mm)	20	25	25	25	30
Total length (L)	(mm)	85	100	106	117	135
Stroke	(mm)	50	50	50	50	63
Total length (L)	(mm)	115	125	131	142	168
Stroke	(mm)	100	100	100	100	100
Total length (L)	(mm)	165	175	181	192	205
Stroke	(mm)	160	160	160	160	160
Total length (L)	(mm)	228	238	244	255	269
Tapped x depth	(mm)	M8 x 12	M10 x 15	M10 x 15	M12 x 18	M16 x 24
Stroke	(mm)	200	200	200	200	200
Total length (L)	(mm)	268	278	284	295	309
Tapped x depth	(mm)	-	M10 x 15	M10 x 15	M12 x 18	M16 x 24

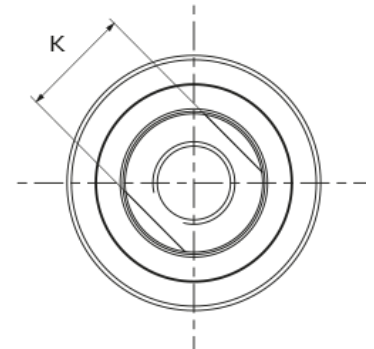
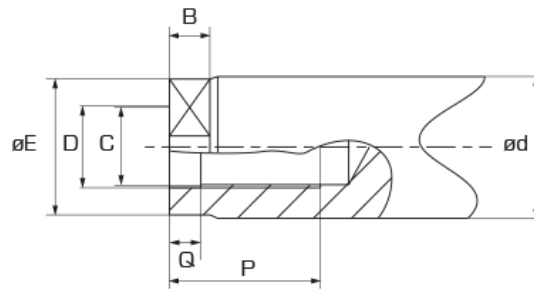
Hydraulic block cylinders BDA

Rod ends

Type F



Type T



TYPE	Units	BDE 25	BDE 32	BDE 40	BDE 50	BDE 63	BDE 80	BDE 100	BDE 125
ød	(mm)	16	20	25	32	40	50	63	80
B	(mm)	5.8	7.5	8.5	9	12.2	12	12	13
C	(mm)	M10 x 1.5	M12 x 1.75	M16 x 2	M20 x 2.5	M27 x 3	M30 x 3.5	M42 x 4.5	M48 x 5
øD	(mm)	10.5	12.5	16.5	21	28	31	43	49
øE	(mm)	15.2	19	24	31	39	49	61.5	78
K	(mm)	13	17	22	27	36	46	55	70
L	(mm)	18	22	28	36	45	52	60	64
M	(mm)	M14 x 1.5	M16 x 1.5	M20 x 1.5	M27 x 2	M33 x 2	M39 x 2	M45 x 2	M52 x 2
P	(mm)	18	18	25	30	40	40	60	70
Q	(mm)	4	4	7	7	10	10	10	10



Hydraulic block cylinders : BDA F3 Type

Test pressure: 500 bars
Max working pressure: 350 bars

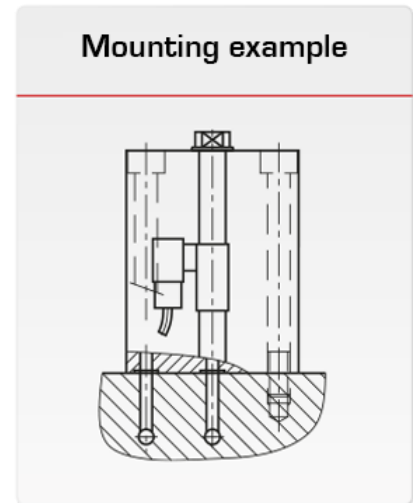
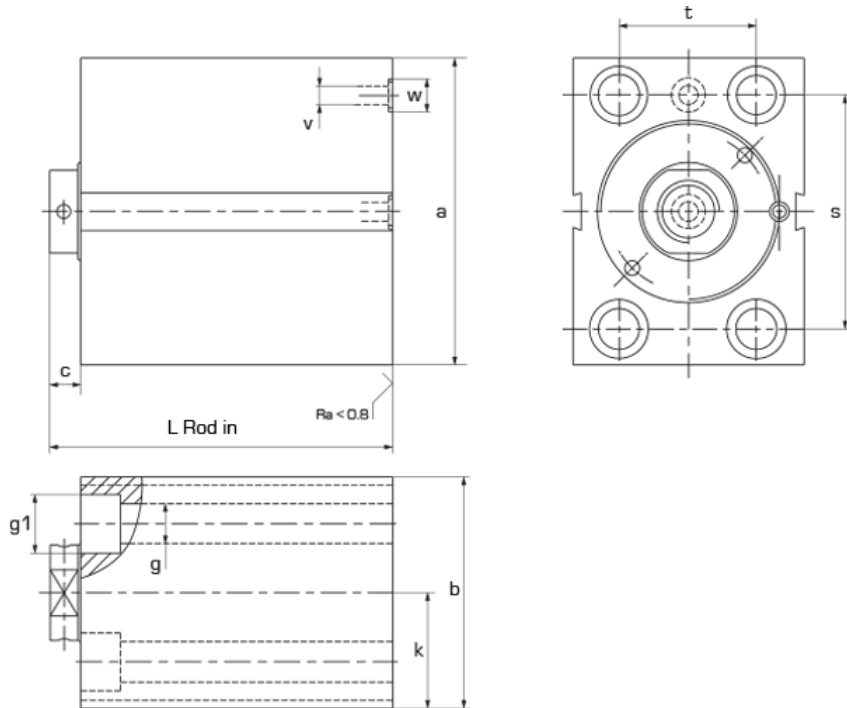
Feeding holes at the front.
Fixture parallel to the rod with counterbores.
Seals kits are available on stock
For strokes ≥ 160 mm, there are 4 tapped holes per side instead of 4 smooth holes

Characteristics

- Magnetic detection of the piston
- Double sealing of the rod
- Solid body with burnished bore
- Solid piston rod with treated steel
- Strokes precision $\pm 0,3$ mm
- The key is provided
- Don't use BDA in temperatures over 115°C (239°F)
- Sensor must be at distance of 30 mm from any metallic surface.



Hydraulic block
cylinders BDA



TYPE	Units	BDA 25	BDA 40	BDA 65	BDA 100	BDA 160
Piston ϕ	(mm)	25	32	40	50	63
Rod ϕ	(mm)	16	20	25	32	40
Pushing force at 100 bars	(kN)	4.9	8.0	12.5	19.6	31.1
Pulling force at 100 bars	(kN)	2.9	4.9	7.7	11.6	18.6
a	(mm)	65	75	85	100	125
b	(mm)	45	55	63	75	95
c	(mm)	7	10	10	10	14
g	(mm)	8.5	10.5	10.5	13	17
g1 x depth	(mm)	$\phi 14 \times 9$	$\phi 17 \times 11$	$\phi 17 \times 11$	$\phi 19 \times 13$	$\phi 25 \times 17$
k	(mm)	22.5	27.5	31.5	37.5	47.5
s	(mm)	50	55	63	76	95
t	(mm)	30	35	40	45	65
v	(mm)	4	5	6	6	8
w x depth	(mm)	9.8×1.1	9.8×1.1	9.8×1.1	10.8×1.1	13.8×1.5
Seals dimensions	(mm)	7×1.5	7×1.5	7×1.5	8×1.5	10×2



Hydraulic block cylinders : BDA F3 Type

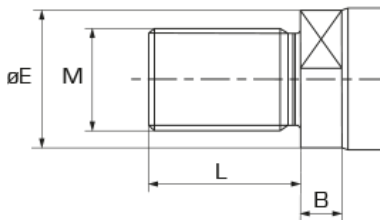
Test pressure: 500 bars
Max working pressure: 350 bars

Stroke	(mm)	20	25	25	25	30
Total length (L)	(mm)	85	100	106	117	135
Stroke	(mm)	50	50	50	50	63
Total length (L)	(mm)	115	125	131	142	168
Stroke	(mm)	100	100	100	100	100
Total length (L)	(mm)	165	175	181	192	205
Stroke	(mm)	160	160	160	160	160
Total length (L)	(mm)	228	238	244	255	269
Tapped x depth	(mm)	M8 x 12	M10 x 15	M10 x 15	M12 x 18	M16 x 24
Stroke	(mm)	200	200	200	200	200
Total length (L)	(mm)	268	278	284	295	309
Tapped x depth	(mm)	-	M10 x 15	M10 x 15	M12 x 18	M16 x 24

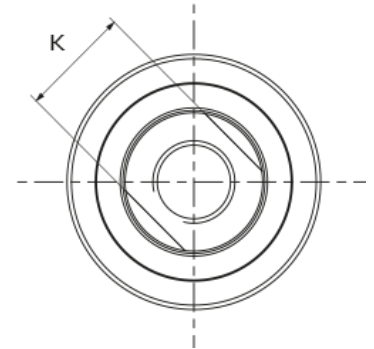
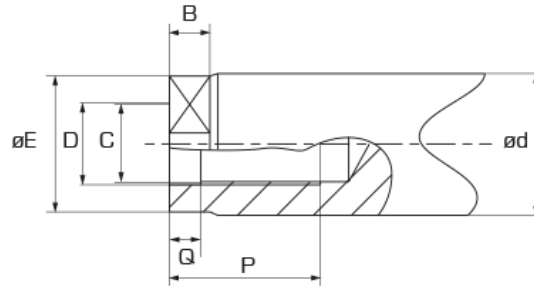
Hydraulic block cylinders BDA

Rod ends

Type F



Type T



TYPE	Units	BDE 25	BDE 32	BDE 40	BDE 50	BDE 63	BDE 80	BDE 100	BDE 125
ød	(mm)	16	20	25	32	40	50	63	80
B	(mm)	5.8	7.5	8.5	9	12.2	12	12	13
C	(mm)	M10 x 1.5	M12 x 1.75	M16 x 2	M20 x 2.5	M27 x 3	M30 x 3.5	M42 x 4.5	M48 x 5
øD	(mm)	10.5	12.5	16.5	21	28	31	43	49
øE	(mm)	15.2	19	24	31	39	49	61.5	78
K	(mm)	13	17	22	27	36	46	55	70
L	(mm)	18	22	28	36	45	52	60	64
M	(mm)	M14 x 1.5	M16 x 1.5	M20 x 1.5	M27 x 2	M33 x 2	M39 x 2	M45 x 2	M52 x 2
P	(mm)	18	18	25	30	40	40	60	70
Q	(mm)	4	4	7	7	10	10	10	10



Hydraulic block cylinders S48

Catégorie

S48

Hydraulic block cylinders - S48

Hydraulic block
cylinders BDA



Hydraulic block cylinders S48 Guide

S48 designation

Test pressure: 500 bars
 Max working pressure: 350 bars

Example of designation >>>

				S48	50	60	T
TYPE							
Hydraulic block cylinder				S48	50	60	T
Feeding symmetrical to the keyway							
PISTON DIAMETER							
40	50	63		50			
STROKES (mm)							
Stroke on demand (5 to 200 mm)						60	
ROD ENDS							
Tapped rod							T
Threaded rod							F

Designation example: S48 50.60 T
 Cylinder S48, Piston diameter 50mm, Stroke 60mm, Tapped rod, Viton® seals is standard (150°C/302°F max).

OPTION : STROKE REDUCTION

Possibility to add a stroke limitation ring
 Code example: S48 40.50 T
 Cylinder with the outside size of a stroke 80mm but the stroke is limited to 50mm.



Hydraulic block cylinders : S48

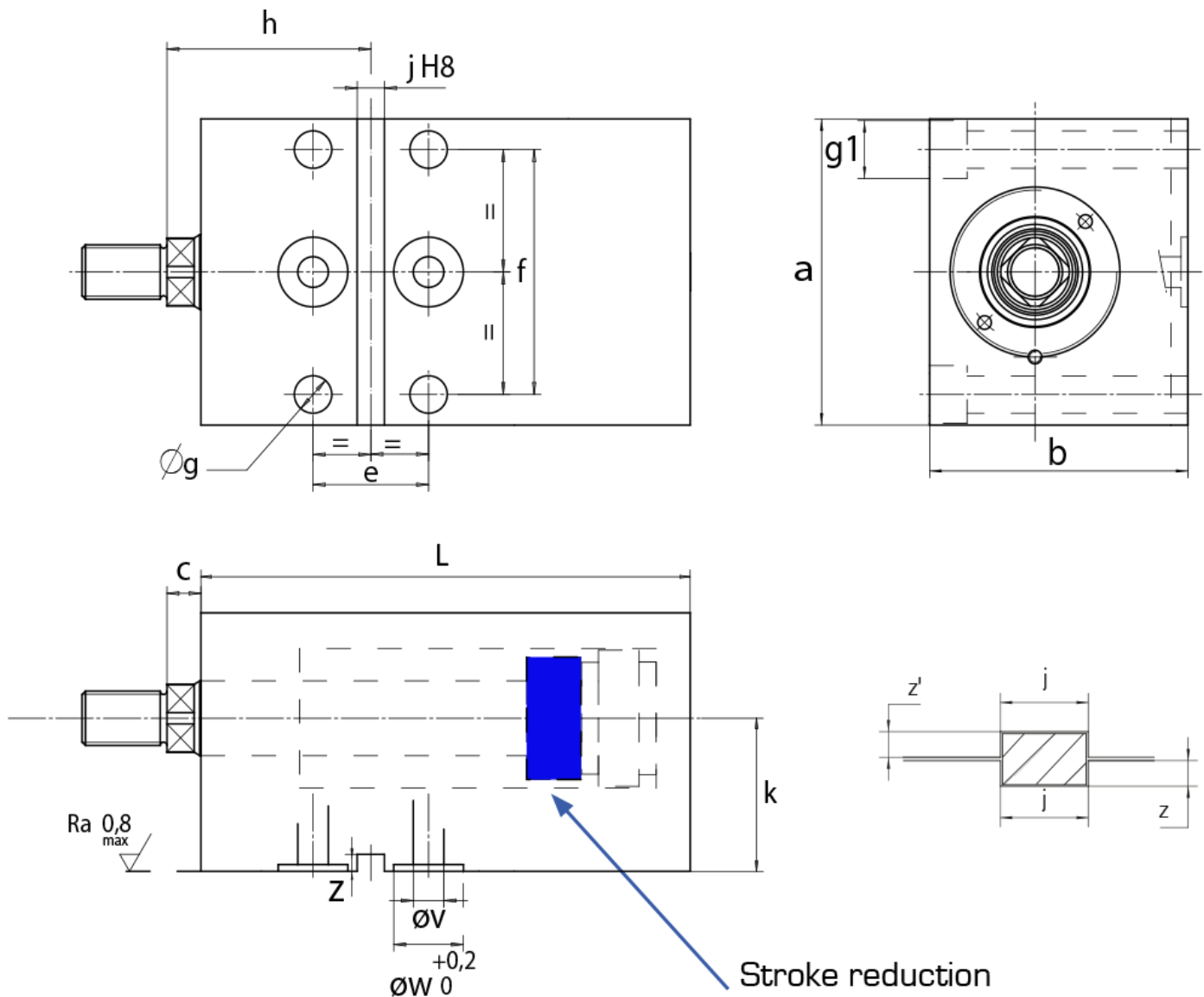
Test pressure: 500 bars
Max working pressure: 350 bars
HELD IN STOCK

Characteristics

- Double stem seal
- Galvanized one-piece body
- Treated one-piece piston rod
- Strokes $\pm 0.3\text{mm}$
- 2-year or 400 km warranty (4 million cycles for a 50 mm stroke)



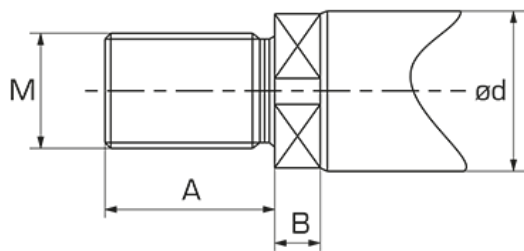
Hydraulic block
cylinders S48



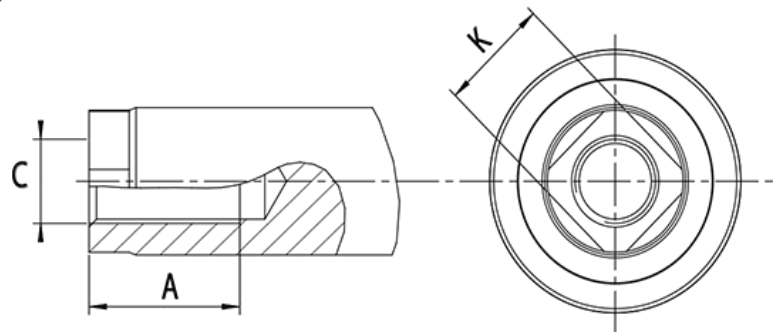
TYPE	Units	S48 40	S48 50	S48 63
Piston	(mm)	40	50	63
Rod	(mm)	22	28	36
Pushing force at 100 bars	(kN)	12.5	19.6	31.1
Pulling force at 100 bars	(kN)	8.7	13.4	21
L (strokes from 5 to 80 mm)	(mm)	165	175	188
L (strokes from 85 to 120 mm)	(mm)	205	215	228
L (strokes from 125 to 160 mm)	(mm)	245	255	268
L (strokes from 165 to 200 mm)	(mm)	285	295	308
a	(mm)	90	100	120
b	(mm)	76	86	106
c	(mm)	10	10	12
e	(mm)	34	35	42
f	(mm)	72	82	98
g	(mm)	11	11	13
g1 x depth	(mm)	ø17 x 11	ø17 x 11	ø19 x 13
h	(mm)	60	60	72
j H8	(mm)	8	10	12
k	(mm)	45	50	60
v	(mm)	9	9	10
w x depth	(mm)	ø20.5 x 2	ø20.5 x 2	ø22.3 x 2
z	(mm)	5	5	5
z' (+0.1 0)	(mm)	5	5	5

Rod ends

Type F



Type T



TYPE	Units	S48 40	S48 50	S48 63
ød	(mm)	22	28	36
A	(mm)	25	30	40
B	(mm)	8	8	10
M	(mm)	M16 x 1.5	M20 x 1.5	M27 x 2
C	(mm)	M10	M16 x 1.5 (S : M16 x 2)	M20 x 1.5 (S : M20 x 2.5)
K	(mm)	17	22	30



Hydraulic block cylinders BDE

Catégorie

BDE AD Hydraulic block cylinders - BDE AD Type

BDE AG Hydraulic block cylinders - BDE AG Type

BDE DG Hydraulic block cylinders - BDE DG Type

BDE F1 Hydraulic block cylinders - BDE F1 Type

BDE F2 Hydraulic block cylinders - BDE F2 Type

BDE F3 Hydraulic block cylinders - BDE F3 Type

BDE F4 Hydraulic block cylinders - BDE F4 Type

BDE P Hydraulic block cylinders - BDE P Type



Hydraulic block cylinders BDE Guide

Guide

BDE Designation

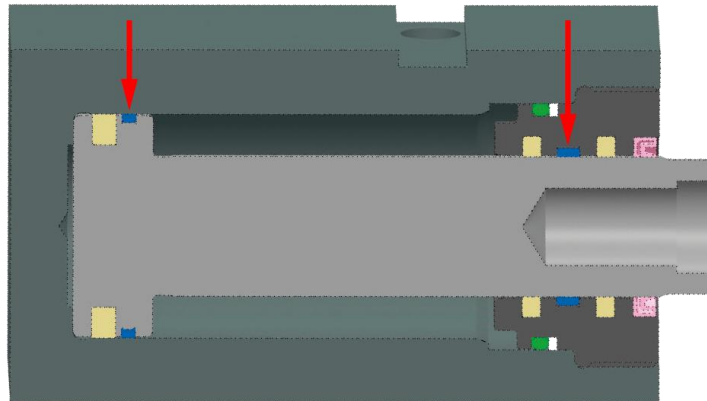
Example of designation >>>		BDE	63	150	V	F4	F	H80	X120	PU	LI
MODELE											
Steel body, life improved		BDE									
Ø BORE (mm)											
25	32	40	50	63	80	100	125				
STROKES (mm)											
From 5 to 5 up to 50 mm, then from 10 to 10 (Other on request)				150							
SEALS											
Nitrile T<90°C (194°F)					N						
Viton® T<150°C (302°F)					V						
High temperature T<200°C (392°F)					HT						
FIXTURE AND FEEDING											
Parallel fixture to the rod/Tapped feeding port						P					
Perpendicular fixture to the rod/Feeding on the left or right side						DG					
Perpendicular fixture to the rod/Feeding right side on the top						AD					
Perpendicular fixture to the rod/Feeding left side on the top						AG					
Perpendicular fixture to the rod/Below feeding						F1					
Parallel fixture to the rod/Feeding on the front						F2					
Parallel fixture to the rod/Feeding on the bottom						F3					
Parallel fixture to th rod/Symetrical feeding in each side of keystroke						F4					
ROD ENDS											
Tapped						T					
Threaded						F					
KEYGROOVE POSITION (mm) [F4 model]											
Dimension H (mm)							H**				
REAR FIXTURE POSITION (mm) [F4 model]											
For strokes > 130mm								X***			
OPTIONS											
Venting port									PU	PU	
Smooth fixing holes [C > 130mm]									LI	LI	
Tapped fixing holes [C < 130mm]									TA	TA	

Order code example: BDE 63.150 V F4 F H80 X120 PU LI

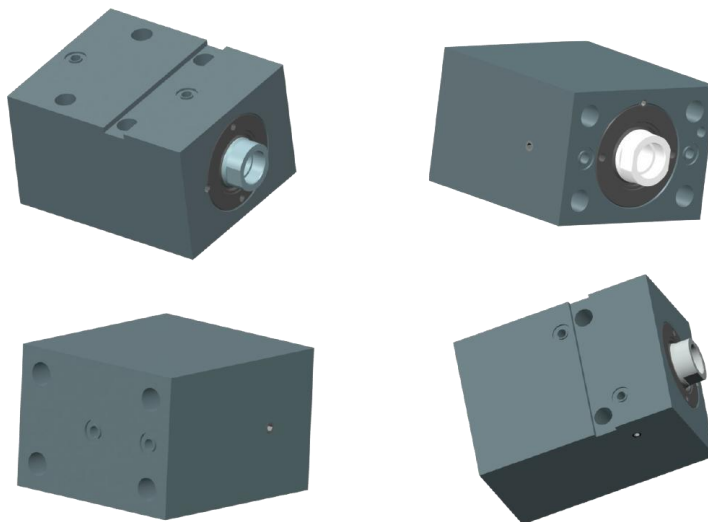
Steel block cylinder , double acting, improved guiding, bore 63 mm, stroke 150 mm, Viton® seals, fixture and feeding F4 type, key groove, 80 mm, rear fixation at 12 mm, venting port, smooth fixing holes.

BDE improvements

1 : Guiding improvement for heavy duty - Lowering of leakage risk, life time improvement

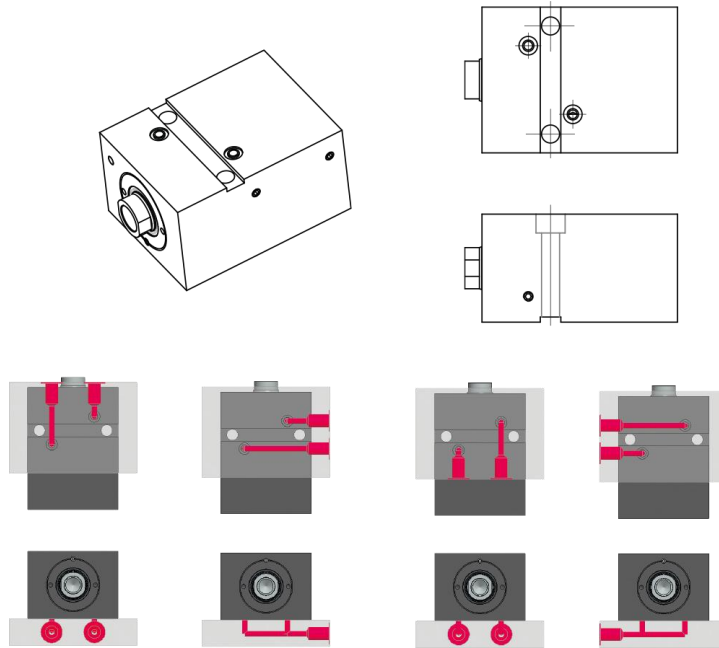


2 : Feeding seal in closed grooves and counterbores on all fixing holes



3 : New model: F4 with keyway position on demand.

Cheaper
More compact
Feeding in the same plan



4 : High temperature seals: Up to 200°C (392°F).

(For temperature higher than 150°C (302°F), please contact us)



Hydraulic block cylinders : BDE AD Type

Test pressure: 500 bars
Max working pressure: 350 bars

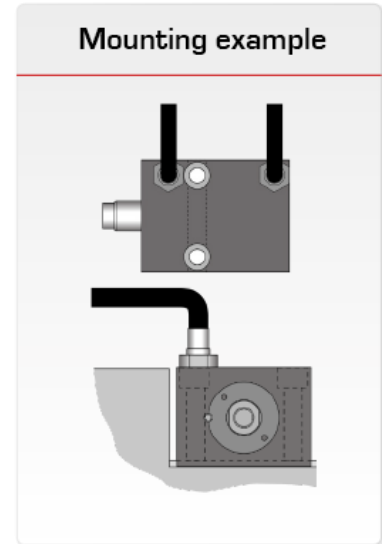
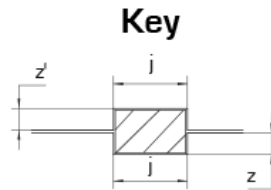
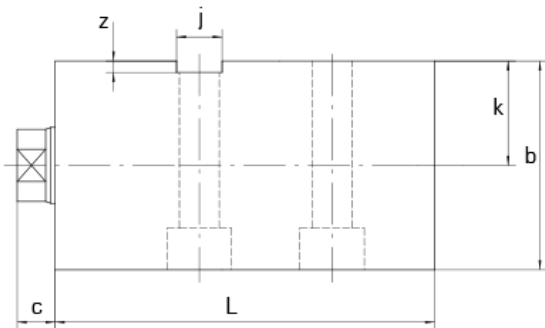
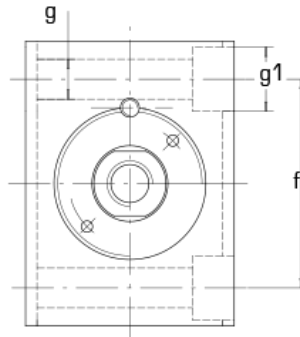
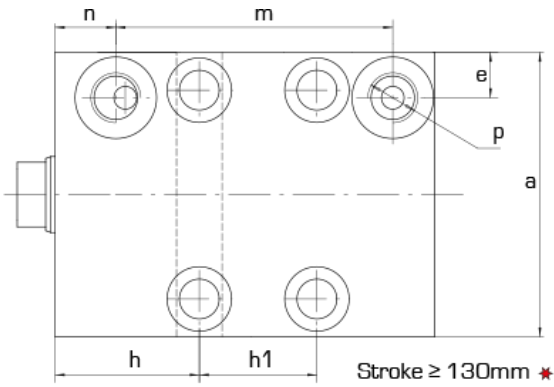
Feeding ports on upper right side.
Fixture perpendicular to the rod.
Key provided
Seals kits on stock

Characteristics

Key groove (key provided)
Solid body, burnished bore
Solid piston rod
Strokes $\pm 0,3\text{mm}$
Guiding improved on piston and rod



Hydraulic block
cylinders BDE



TYPE	Units	BDE 25	BDE 32	BDE 40	BDE 50	BDE 63	BDE 80	BDE 100	BDE 125
Piston ϕ	(mm)	25	32	40	50	63	80	100	125
Rod ϕ	(mm)	16	20	25	32	40	50	63	80
Pushing force at 100 bars	(kN)	4.9	8.0	12.5	19.6	31.1	50.2	78.5	122.7
Pulling force at 100 bars	(kN)	2.9	4.9	7.7	11.6	18.6	30.6	47.4	72.4
a	(mm)	65	75	85	100	125	160	200	230
b	(mm)	45	55	63	75	95	120	150	180
c	(mm)	7	10	10	10	14	14	15	16
e	(mm)	10.5	12	12	12	17.5	17.5	17.5	17.5
f	(mm)	50	55	63	76	95	120	158	180
g	(mm)	8.5	10.5	10.5	13	17	21	25	32
g1 x depth	(mm)	$\phi 14 \times 9$	$\phi 17 \times 11$	$\phi 17 \times 11$	$\phi 20 \times 13$	$\phi 25 \times 17$	$\phi 32 \times 21$	$\phi 38 \times 25$	$\phi 47 \times 30.5$
h	(mm)	33	38	40	44	50	60	64	82
j H8	(mm)	10	12	12	16	20	24	28	35
k	(mm)	22.5	27.5	31.5	37.5	47.5	60	75	90
n	(mm)	15	16.2	20	21.5	19.5	26	27	40.5
p		G1/8	G1/4	G1/4	G1/4	G1/2	G1/2	G1/2	G1/2
z	(mm)	2	3	4	5	6	7	8	9



Hydraulic block cylinders : BDE AD Type

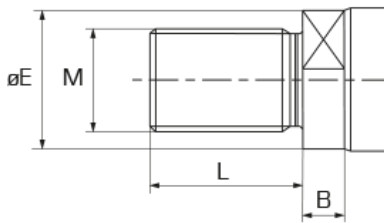
Test pressure: 500 bars
Max working pressure: 350 bars

z' (+0.1 0)	(mm)	6	5	4	5	6	7	8	9
Stroke(C) ≤ 130 mm									
Body length (L)	(mm)	C+44	C+50	C+54	C+65	C+72	C+85	C+90	C+110
Between feeding holes (m)	(mm)	C+18	C+23	C+23	C+31	C+36	C+38	C+38	C+39
Stroke(C) > 130 mm									
Body length (L)	(mm)	C+58.5	C+66	C+70	C+86	C+90	C+106	C+108	C+137
Between feeding holes (m)	(mm)	C+21	C+26	C+26	C+34	C+40	C+42	C+42	C+43
Between fixing holes (h1)	(mm)	C-14	C-19	C-18.5	C-13.5	C-22.5	C-28	C-32	C-40
Minimum stroke	(mm)	15	20	20	20	25	30	35	45
Maximum stroke	(mm)	200	250	300	350	350	400	400	400

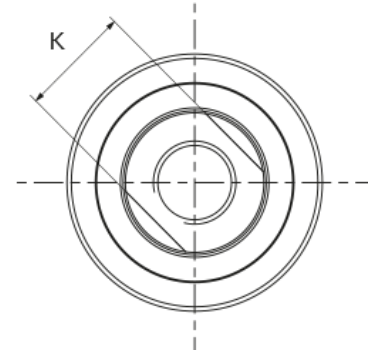
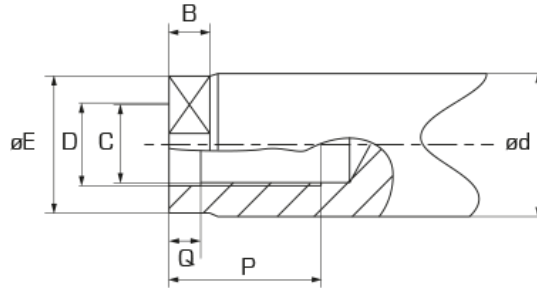
Hydraulic block cylinders BDE

Rod ends

Type F



Type T



TYPE	Units	BDE 25	BDE 32	BDE 40	BDE 50	BDE 63	BDE 80	BDE 100	BDE 125
ød	(mm)	16	20	25	32	40	50	63	80
B	(mm)	5.8	7.5	8.5	9	12.2	12	12	13
C	(mm)	M10 x 1.5	M12 x 1.75	M16 x 2	M20 x 2.5	M27 x 3	M30 x 3.5	M42 x 4.5	M48 x 5
øD	(mm)	10.5	12.5	16.5	21	28	31	43	49
øE	(mm)	15.2	19	24	31	39	49	61.5	78
K	(mm)	13	17	22	27	36	46	55	70
L	(mm)	18	22	28	36	45	52	60	64
M	(mm)	M14 x 1.5	M16 x 1.5	M20 x 1.5	M27 x 2	M33 x 2	M39 x 2	M45 x 2	M52 x 2
P	(mm)	18	18	25	30	40	40	60	70
Q	(mm)	4	4	7	7	10	10	10	10

Options



Hydraulic block cylinders : BDE AD Type

Test pressure: 500 bars
Max working pressure: 350 bars

TYPE	Units	BDE 25	BDE 32	BDE 40	BDE 50	BDE 63	BDE 80	BDE 100	BDE 125
TA	(mm)	M8 x 12	M10 x 15	M10 x 15	M12 x 18	M16 x 24	M20 x 30	M24 x 36	M30 x 45
L	(mm)	8.5	10.5	10.5	13	17	21	25	32



Hydraulic block cylinders : BDE AG Type

Test pressure: 500 bars
Max working pressure: 350 bars

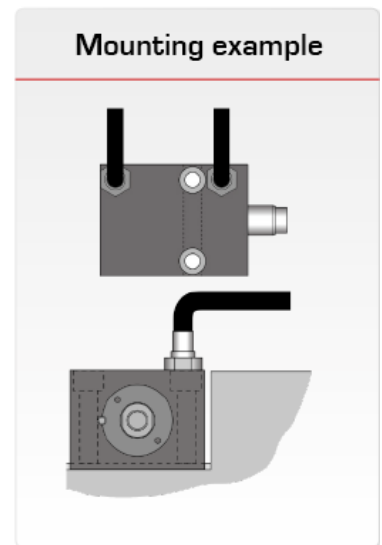
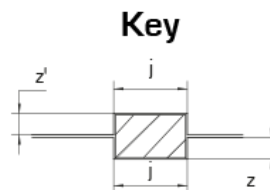
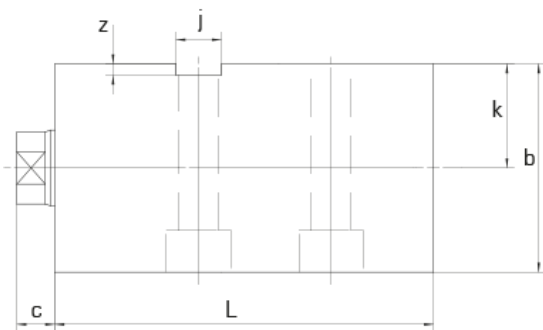
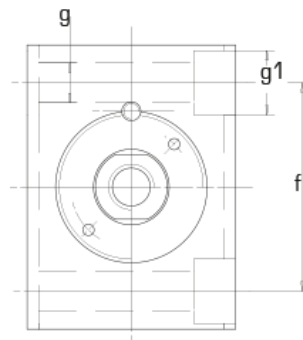
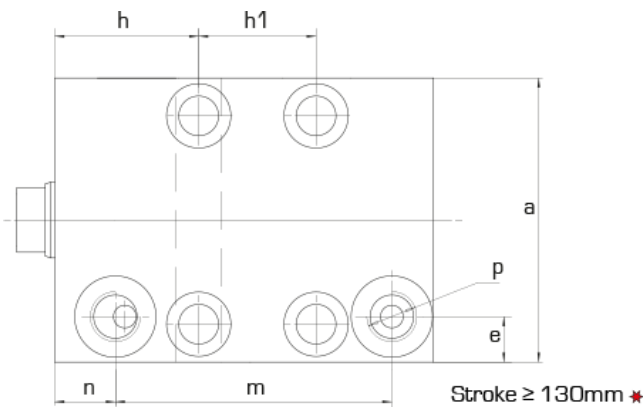
Feeding ports at the top left side.
Fixture perpendicular to the rod.
Key provided
Seal kits on stock

Characteristics

Key groove (key provided)
Solid body, burnished bore
Solid piston rod
Strokes $\pm 0,3\text{mm}$
Guiding improved on piston and rod



Hydraulic block cylinders BDE



TYPE	Units	BDE 25	BDE 32	BDE 40	BDE 50	BDE 63	BDE 80	BDE 100	BDE 125
Piston ϕ	(mm)	25	32	40	50	63	80	100	125
Rod ϕ	(mm)	16	20	25	32	40	50	63	80
Pushing force at 100 bars	(kN)	4.9	8.0	12.5	19.6	31.1	50.2	78.5	122.7
Pulling force at 100 bars	(kN)	2.9	4.9	7.7	11.6	18.6	30.6	47.4	72.4
a	(mm)	65	75	85	100	125	160	200	230
b	(mm)	45	55	63	75	95	120	150	180
c	(mm)	7	10	10	10	14	14	15	16
e	(mm)	10.5	12	12	12	17.5	17.5	17.5	17.5
f	(mm)	50	55	63	76	95	120	158	180
g	(mm)	8.5	10.5	10.5	13	17	21	25	32
g1 x depth	(mm)	$\phi 14 \times 9$	$\phi 17 \times 11$	$\phi 17 \times 11$	$\phi 20 \times 13$	$\phi 25 \times 17$	$\phi 32 \times 21$	$\phi 38 \times 25$	$\phi 47 \times 30.5$
h	(mm)	33	38	40	44	50	60	64	82
j H8	(mm)	10	12	12	16	20	24	28	35
k	(mm)	22.5	27.5	31.5	37.5	47.5	60	75	90
n	(mm)	15	16.2	20	21.5	19.5	26	27	40.5
p		G1/8	G1/4	G1/4	G1/4	G1/2	G1/2	G1/2	G1/2



Hydraulic block cylinders : BDE AG Type

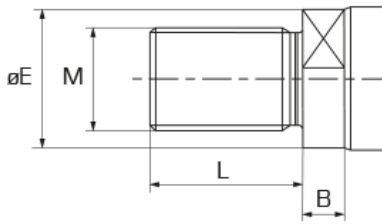
Test pressure: 500 bars
Max working pressure: 350 bars

z	(mm)	2	3	4	5	6	7	8	9
z' (+0.1 0)	(mm)	6	5	4	5	6	7	8	9
Stroke(C) ≤ 130 mm									
Body length (L)	(mm)	C+44	C+50	C+54	C+65	C+72	C+85	C+90	C+110
Between feeding holes (m)	(mm)	C+18	C+23	C+23	C+31	C+36	C+38	C+38	C+39
Stroke(C) > 130 mm									
Body length (L)	(mm)	C+58.5	C+66	C+70	C+86	C+90	C+106	C+108	C+137
Between feeding holes (m)	(mm)	C+21	C+26	C+26	C+34	C+40	C+42	C+42	C+43
Between fixing holes (h1)	(mm)	C-14	C-19	C-18.5	C-13.5	C-22.5	C-28	C-32	C-40
Minimum stroke	(mm)	15	20	20	20	25	30	35	45
Maximum stroke	(mm)	200	250	300	350	350	400	400	400

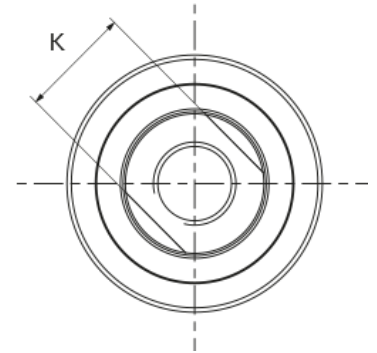
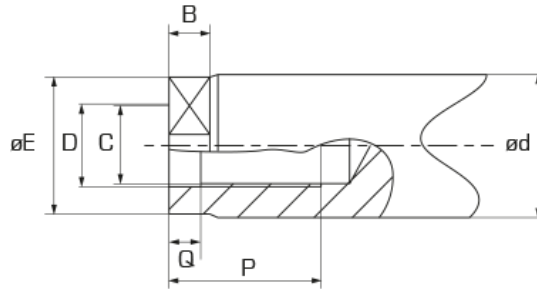
Hydraulic block cylinders BDE

Rod ends

Type F



Type T



TYPE	Units	BDE 25	BDE 32	BDE 40	BDE 50	BDE 63	BDE 80	BDE 100	BDE 125
ød	(mm)	16	20	25	32	40	50	63	80
B	(mm)	5.8	7.5	8.5	9	12.2	12	12	13
C	(mm)	M10 x 1.5	M12 x 1.75	M16 x 2	M20 x 2.5	M27 x 3	M30 x 3.5	M42 x 4.5	M48 x 5
øD	(mm)	10.5	12.5	16.5	21	28	31	43	49
øE	(mm)	15.2	19	24	31	39	49	61.5	78
K	(mm)	13	17	22	27	36	46	55	70
L	(mm)	18	22	28	36	45	52	60	64
M	(mm)	M14 x 1.5	M16 x 1.5	M20 x 1.5	M27 x 2	M33 x 2	M39 x 2	M45 x 2	M52 x 2
P	(mm)	18	18	25	30	40	40	60	70
Q	(mm)	4	4	7	7	10	10	10	10

Options



Hydraulic block cylinders : BDE AG Type

Test pressure: 500 bars
Max working pressure: 350 bars

TYPE	Units	BDE 25	BDE 32	BDE 40	BDE 50	BDE 63	BDE 80	BDE 100	BDE 125
TA	(mm)	M8 x 12	M10 x 15	M10 x 15	M12 x 18	M16 x 24	M20 x 30	M24 x 36	M30 x 45
L	(mm)	8.5	10.5	10.5	13	17	21	25	32



Hydraulic block cylinders : BDE DG Type

Test pressure: 500 bars
Max working pressure: 350 bars

Tapped ports.

Keyway on both sides, allowing the feeding from the left or right side. Key provided

Seals kits available on stock

Characteristics

Key groove (key provided)

Solid body, burnished bore

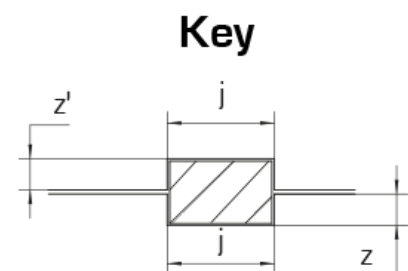
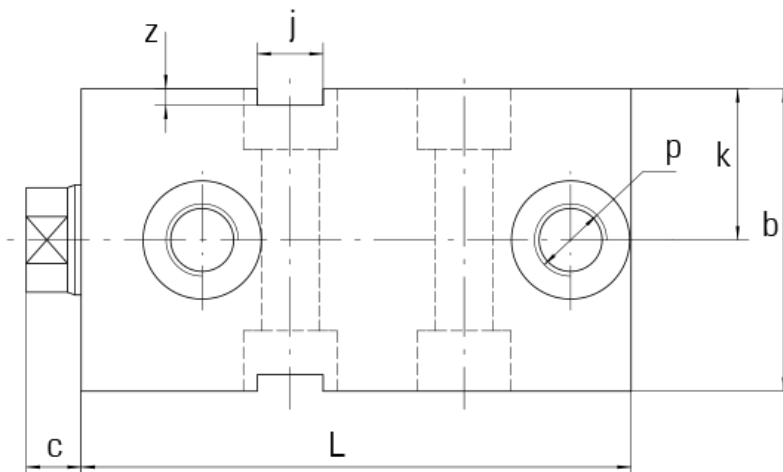
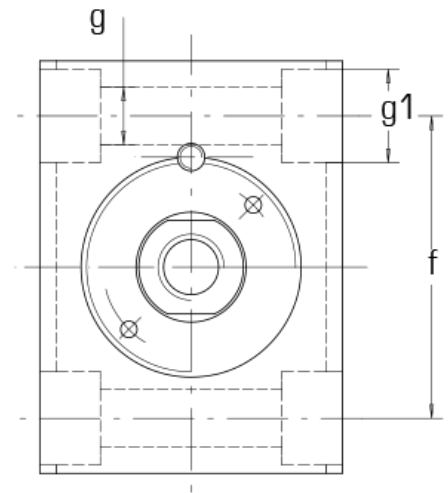
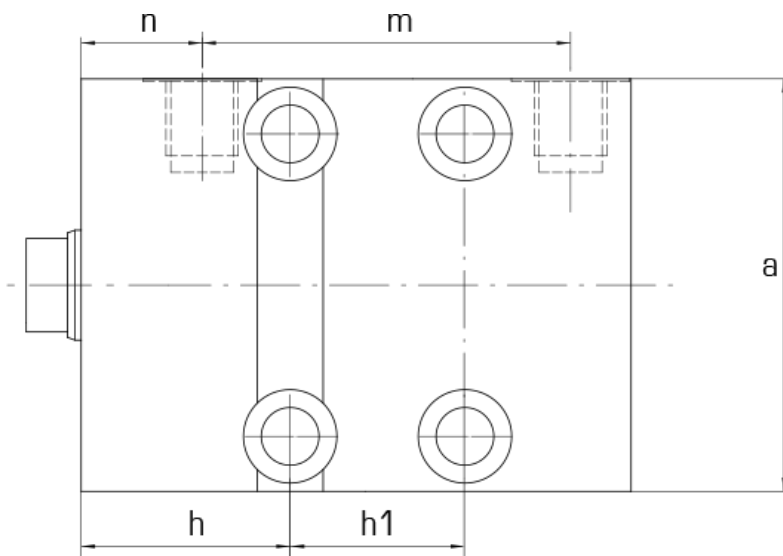
Solid piston rod

Strokes $\pm 0,3\text{mm}$

Guiding improved on piston and rod



Hydraulic block
cylinders BDE





Hydraulic block cylinders : BDE DG Type

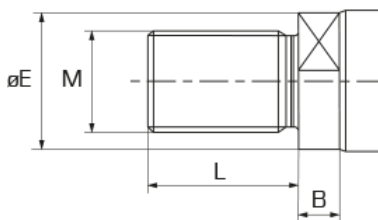
Test pressure: 500 bars
Max working pressure: 350 bars

Hydraulic block cylinders BDE

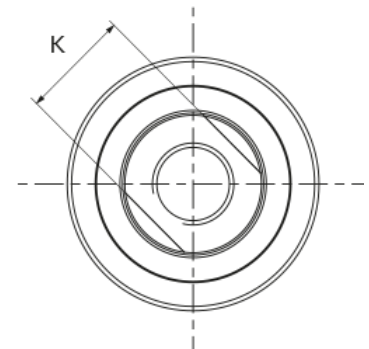
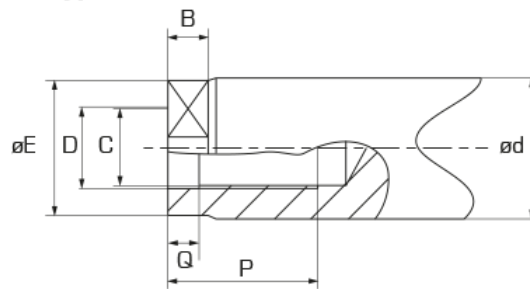
TYPE	Units	BDE 25	BDE 32	BDE 40	BDE 50	BDE 63	BDE 80	BDE 100	BDE 125
Piston ø	(mm)	25	32	40	50	63	80	100	125
Rod ø	(mm)	16	20	25	32	40	50	63	80
Pushing force at 100 bars	(kN)	4.9	8.0	12.5	19.6	31.1	50.2	78.5	122.7
Pulling force at 100 bars	(kN)	2.9	4.9	7.7	11.6	18.6	30.6	47.4	72.4
a	(mm)	65	75	85	100	125	160	200	230
b	(mm)	45	55	63	75	95	120	150	180
c	(mm)	7	10	10	10	14	14	15	16
f	(mm)	50	55	63	76	95	120	158	180
g	(mm)	8.5	10.5	10.5	13	17	21	25	32
g1 x depth	(mm)	ø14 x 9	ø17 x 11	ø17 x 11	ø20 x 13	ø25 x 17	ø32 x 21	ø38 x 25	ø47 x 30.5
h	(mm)	33	38	40	44	50	60	64	82
j H8	(mm)	10	12	12	16	20	24	28	35
k	(mm)	22.5	27.5	31.5	37.5	47.5	60	75	90
n	(mm)	18	22	24	27	26	34	35	47
p		G1/4	G1/4	G1/4	G1/4	G1/2	G1/2	G1/2	G1/2
z	(mm)	2	3	4	5	6	7	8	9
z' (+0.1 0)	(mm)	6	5	4	5	6	7	8	9
Stroke(C) ≤ 130 mm									
Body length (L)	(mm)	C+44	C+50	C+54	C+65	C+72	C+85	C+90	C+110
Between feeding holes (m)	(mm)	C+15	C+17	C+19	C+25	C+29	C+30	C+30	C+32
Stroke(C) > 130 mm									
Body length (L)	(mm)	C+58.5	C+66	C+70	C+86	C+90	C+106	C+108	C+137
Between feeding holes (m)	(mm)	C+18	C+20	C+22	C+28	C+33	C+34	C+34	C+36
Between fixing holes (h1)	(mm)	C-12	C-12	C-10	C-6	C-15	C-18	C-24	C-34
Maximum stroke	(mm)	200	250	300	350	350	400	400	400

Rod ends

Type F



Type T





Hydraulic block cylinders : BDE DG Type

Test pressure: 500 bars
Max working pressure: 350 bars

TYPE	Units	BDE 25	BDE 32	BDE 40	BDE 50	BDE 63	BDE 80	BDE 100	BDE 125
ed	(mm)	16	20	25	32	40	50	63	80
B	(mm)	5.8	7.5	8.5	9	12.2	12	12	13
C	(mm)	M10 x 1.5	M12 x 1.75	M16 x 2	M20 x 2.5	M27 x 3	M30 x 3.5	M42 x 4.5	M48 x 5
ed	(mm)	10.5	12.5	16.5	21	28	31	43	49
eE	(mm)	15.2	19	24	31	39	49	61.5	78
K	(mm)	13	17	22	27	36	46	55	70
L	(mm)	18	22	28	36	45	52	60	64
M	(mm)	M14 x 1.5	M16 x 1.5	M20 x 1.5	M27 x 2	M33 x 2	M39 x 2	M45 x 2	M52 x 2
P	(mm)	18	18	25	30	40	40	60	70
Q	(mm)	4	4	7	7	10	10	10	10

Hydraulic block cylinders BDE

Options

TYPE	Units	BDE 25	BDE 32	BDE 40	BDE 50	BDE 63	BDE 80	BDE 100	BDE 125
TA	(mm)	M8 x 12	M10 x 15	M10 x 15	M12 x 18	M16 x 24	M20 x 30	M24 x 36	M30 x 45
LI	(mm)	8.5	10.5	10.5	13	17	21	25	32



Hydraulic block cylinders : BDE F1 Type

Test pressure: 500 bars
Max working pressure: 350 bars

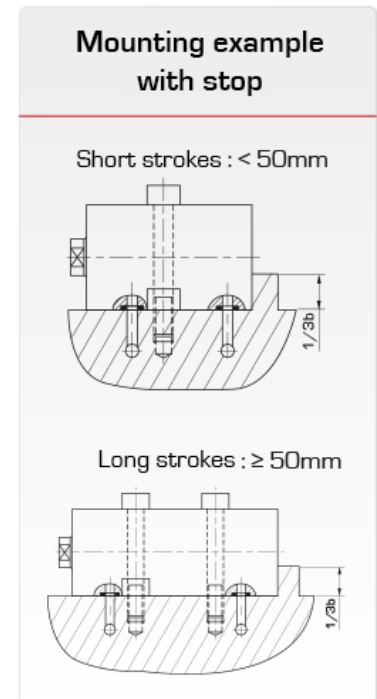
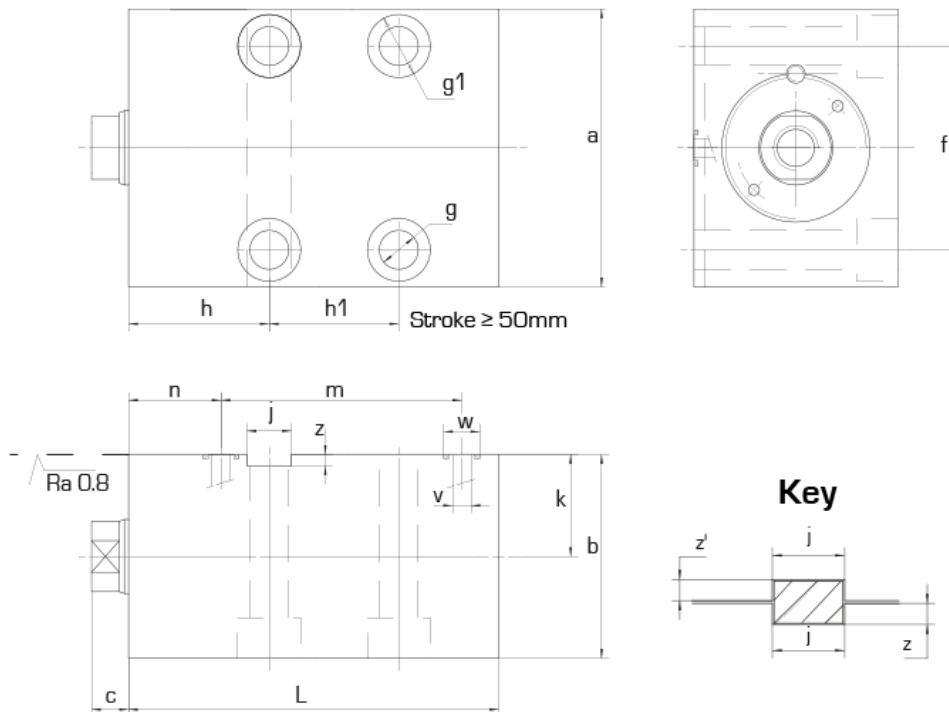
Feeding holes at the bottom.
Fixture perpendicular to the rod.
Key provided
Seals kits are available on stock

Characteristics

Key groove (key provided)
Solid body, burnished bore
Solid piston rod
Strokes $\pm 0,3\text{mm}$
Guiding improved on piston and rod



Hydraulic block
cylinders BDE



TYPE	Units	BDE 25	BDE 32	BDE 40	BDE 50	BDE 63	BDE 80	BDE 100	BDE 125
Piston ϕ	(mm)	25	32	40	50	63	80	100	125
Rod ϕ	(mm)	16	20	25	32	40	50	63	80
Pushing force at 100 bars	(kN)	4.9	8.0	12.5	19.6	31.1	50.2	78.5	122.7
Pulling force at 100 bars	(kN)	2.9	4.9	7.7	11.6	18.6	30.6	47.4	72.4
a	(mm)	65	75	85	100	125	160	200	230
b	(mm)	45	55	63	75	95	120	150	180
c	(mm)	7	10	10	10	14	14	15	16
f	(mm)	50	55	63	76	95	120	158	180
g	(mm)	8.5	10.5	10.5	13	17	21	25	32
g1 x depth	(mm)	$\phi 14 \times 9$	$\phi 17 \times 11$	$\phi 17 \times 11$	$\phi 19 \times 13$	$\phi 25 \times 17$	$\phi 32 \times 21$	$\phi 38 \times 25$	$\phi 47 \times 30.5$
h	(mm)	33	38	40	44	50	60	64	82
j H8	(mm)	10	12	12	16	20	24	28	35
k	(mm)	22.5	27.5	31.5	37.5	47.5	60	75	90
ϕv	(mm)	4	5	5	6	8	8	8	8
ϕw x depth	(mm)	10.8 x 1.1	10.8 x 1.1	10.8 x 1.1	12.7 x 1.3	14.2 x 1.3	14.2 x 1.3	17.5 x 2	17.5 x 2
n	(mm)	21	25	27	29	32	39	40	47
z	(mm)	2	3	4	5	6	7	8	9



Hydraulic block cylinders : BDE F1 Type

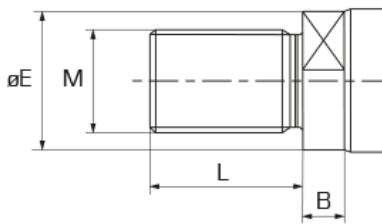
Test pressure: 500 bars
Max working pressure: 350 bars

z' (+0.1 0)	(mm)	6	5	4	5	6	7	8	9
Stroke(C) ≤ 130 mm									
Body length (L)	(mm)	C+44	C+50	C+54	C+65	C+72	C+85	C+90	C+110
Between feeding holes (m)	(mm)	C+15.5	C+15	C+17	C+23	C+24	C+25	C+25	C+32
50 mm ≤ Stroke(C) ≤ 130 mm									
Between fixing holes (h1)	(mm)	C-15	C-15	C-13	C-9	C-19	C-22	C-28	C-38
Stroke(C) > 130 mm									
Body length (L)	(mm)	C+58.5	C+66	C+70	C+86	C+90	C+106	C+108	C+137
Between feeding holes (m)	(mm)	C+18.5	C+18	C+20	C+26	C+28	C+29	C+29	C+36
Between fixing holes (h1)	(mm)	C-12	C-12	C-10	C-6	C-15	C-18	C-24	C-34
Maximum stroke	(mm)	200	250	300	350	350	400	400	400

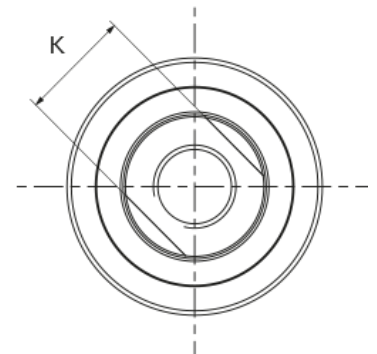
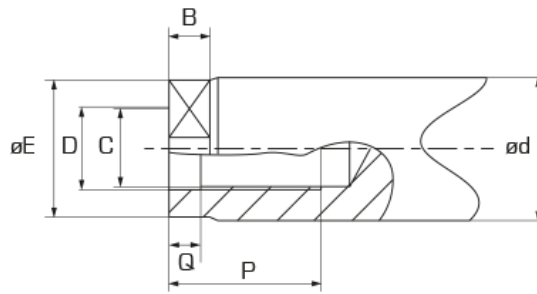
Hydraulic block cylinders BDE

Rod ends

Type F



Type T



TYPE	Units	BDE 25	BDE 32	BDE 40	BDE 50	BDE 63	BDE 80	BDE 100	BDE 125
ød	(mm)	16	20	25	32	40	50	63	80
B	(mm)	5.8	7.5	8.5	9	12.2	12	12	13
C	(mm)	M10 x 1.5	M12 x 1.75	M16 x 2	M20 x 2.5	M27 x 3	M30 x 3.5	M42 x 4.5	M48 x 5
øD	(mm)	10.5	12.5	16.5	21	28	31	43	49
øE	(mm)	15.2	19	24	31	39	49	61.5	78
K	(mm)	13	17	22	27	36	46	55	70
L	(mm)	18	22	28	36	45	52	60	64
M	(mm)	M14 x 1.5	M16 x 1.5	M20 x 1.5	M27 x 2	M33 x 2	M39 x 2	M45 x 2	M52 x 2
P	(mm)	18	18	25	30	40	40	60	70
Q	(mm)	4	4	7	7	10	10	10	10

Options

WARNING:

For cylinders of this type, with strokes >130mm, the 4 smooth mounting holes parallel to the rod are automatically replaced by 4 tapped holes (TA) on the feed face.



Hydraulic block cylinders : BDE F1 Type

Test pressure: 500 bars
Max working pressure: 350 bars

TYPE	Units	BDE 25	BDE 32	BDE 40	BDE 50	BDE 63	BDE 80	BDE 100	BDE 125
TA	(mm)	M8 x 12	M10 x 15	M10 x 15	M12 x 18	M16 x 24	M20 x 30	M24 x 36	M30 x 45
L	(mm)	8.5	10.5	10.5	13	17	21	25	32

Hydraulic block
cylinders BDE



Hydraulic block cylinders : BDE F2 Type

Test pressure: 500 bars
Max working pressure: 350 bars

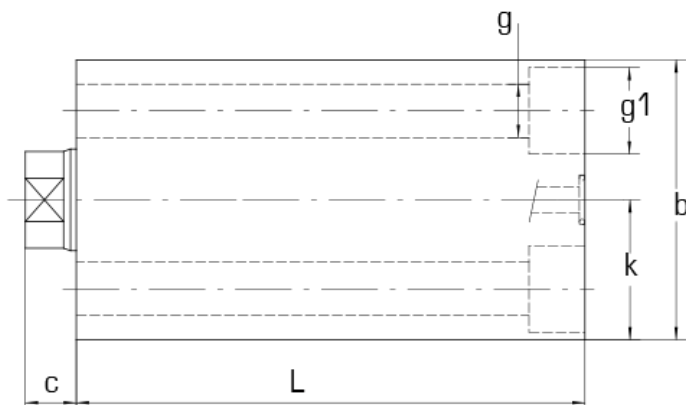
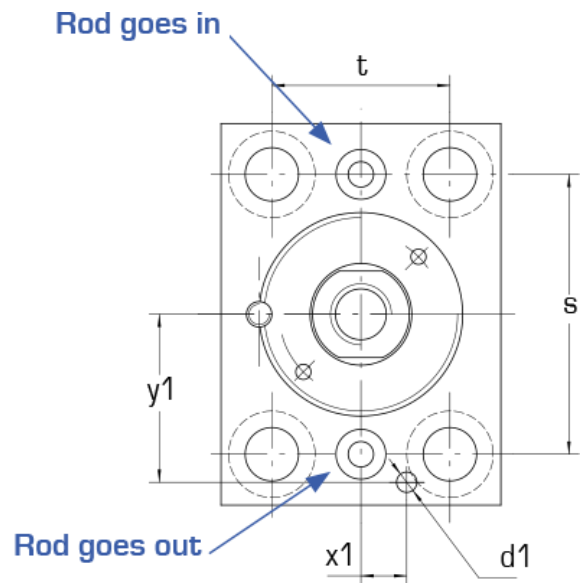
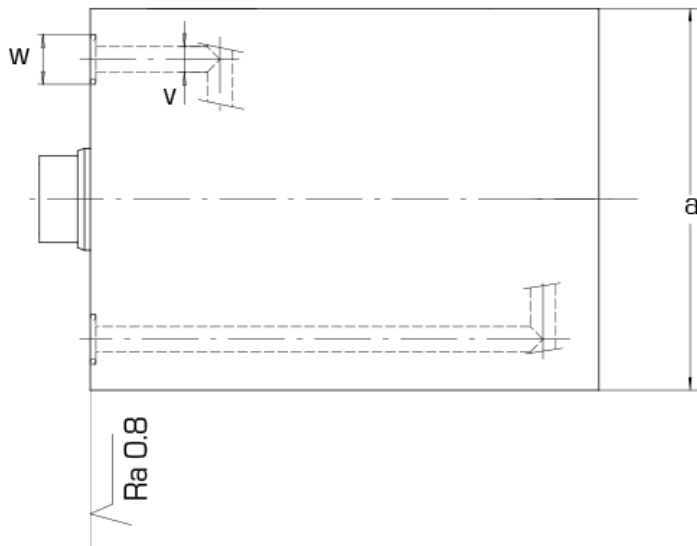
Feeding holes at the front.
Fixture parallel to the rod.
Seals kits are available on stock

Characteristics

Key groove (key provided)
Solid body, burnished bore
Solid piston rod
Strokes $\pm 0,3\text{mm}$
Guiding improved on piston and rod



Hydraulic block
cylinders BDE





Hydraulic block cylinders : BDE F2 Type

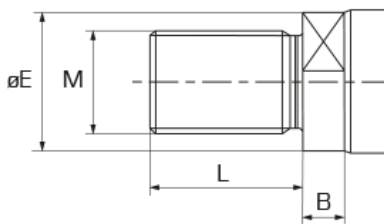
Test pressure: 500 bars
Max working pressure: 350 bars

Hydraulic block cylinders BDE

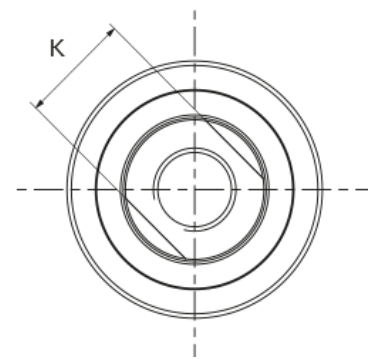
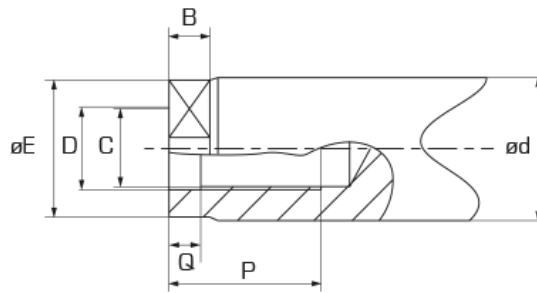
TYPE	Units	BDE 25	BDE 32	BDE 40	BDE 50	BDE 63	BDE 80	BDE 100	BDE 125
Piston ø	(mm)	25	32	40	50	63	80	100	125
Rod ø	(mm)	16	20	25	32	40	50	63	80
Pushing force at 100 bars	(kN)	4.9	8.0	12.5	19.6	31.1	50.2	78.5	122.7
Pulling force at 100 bars	(kN)	2.9	4.9	7.7	11.6	18.6	30.6	47.4	72.4
a	(mm)	65	75	85	100	125	160	200	230
b	(mm)	45	55	63	75	95	120	150	180
c	(mm)	7	10	10	10	14	14	15	16
g	(mm)	8.5	10.5	10.5	13	17	21	25	32
g1 x depth	(mm)	ø14 x 9	ø17 x 11	ø17 x 11	ø20 x 13	ø25 x 17	ø32 x 21	ø38 x 25	ø47 x 30.5
k	(mm)	22.5	27.5	31.5	37.5	47.5	60	75	90
s	(mm)	50	55	63	76	95	120	158	180
t	(mm)	30	35	40	45	65	80	108	130
øv	(mm)	4	5	5	6	8	8	8	8
øw x depth	(mm)	10.8 x 1.1	10.8 x 1.1	10.8 x 1.1	12.7 x 1.3	14.2 x 1.3	14.2 x 1.3	17.5 x 2	17.5 x 2
ød1 x depth	(mm)	3 x 6	3 x 6	5 x 10	6 x 10	8 x 10	10 x 10	10 x 15	12 x 15
x1	(mm)	8	9	10	11	15	18	25	28
y1	(mm)	29	33	37	44	55	70	90	102
TA	(mm)	M8 x 12	M10 x 15	M10 x 15	M12 x 18	M16 x 24	M20 x 30	M24 x 36	M30 x 45
Stroke(C) ≤ 130 mm									
Body length (L)	(mm)	C+44	C+50	C+54	C+65	C+72	C+85	C+90	C+110
Stroke(C) > 130 mm									
Body length (L)	(mm)	C+58.5	C+66	C+70	C+86	C+90	C+106	C+108	C+137
Maximum stroke	(mm)	200	250	300	350	350	400	400	400

Rod ends

Type F



Type T



TYPE	Units	BDE 25	BDE 32	BDE 40	BDE 50	BDE 63	BDE 80	BDE 100	BDE 125
ød	(mm)	16	20	25	32	40	50	63	80
B	(mm)	5.8	7.5	8.5	9	12.2	12	12	13
C	(mm)	M10 x 1.5	M12 x 1.75	M16 x 2	M20 x 2.5	M27 x 3	M30 x 3.5	M42 x 4.5	M48 x 5
øD	(mm)	10.5	12.5	16.5	21	28	31	43	49
øE	(mm)	15.2	19	24	31	39	49	61.5	78
K	(mm)	13	17	22	27	36	46	55	70
L	(mm)	18	22	28	36	45	52	60	64
M	(mm)	M14 x 1.5	M16 x 1.5	M20 x 1.5	M27 x 2	M33 x 2	M39 x 2	M45 x 2	M52 x 2
P	(mm)	18	18	25	30	40	40	60	70
Q	(mm)	4	4	7	7	10	10	10	10



Hydraulic block cylinders : BDE F2 Type

Test pressure: 500 bars
Max working pressure: 350 bars

Options

WARNING:

For cylinders of this type, with strokes >130mm, the 4 smooth mounting holes parallel to the rod are automatically replaced by 4 tapped holes (TA) on the feed face.

TYPE	Units	BDE 25	BDE 32	BDE 40	BDE 50	BDE 63	BDE 80	BDE 100	BDE 125
TA	(mm)	M8 x 12	M10 x 15	M10 x 15	M12 x 18	M16 x 24	M20 x 30	M24 x 36	M30 x 45
L	(mm)	8.5	10.5	10.5	13	17	21	25	32



Hydraulic block cylinders : BDE F3 Type

Test pressure: 500 bars
Max working pressure: 350 bars

Feeding holes at the rear.
Fixture parallel to the rod.
Seals kits are available on stock

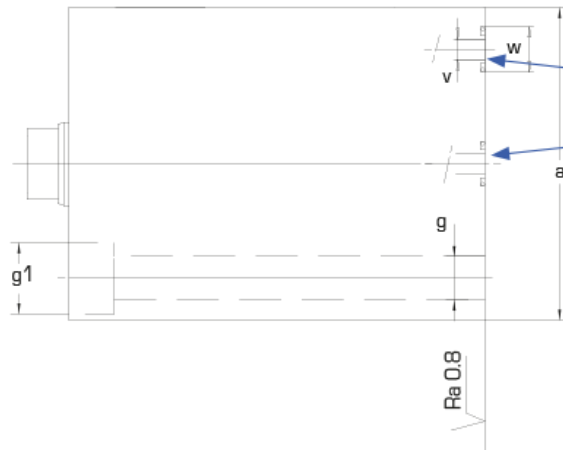
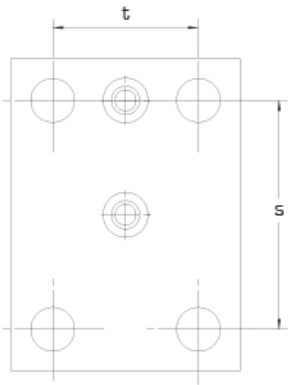
Characteristics

Key groove (key provided)
Solid body, burnished bore
Solid piston rod
Strokes $\pm 0,3\text{mm}$
Guiding improved on piston and rod



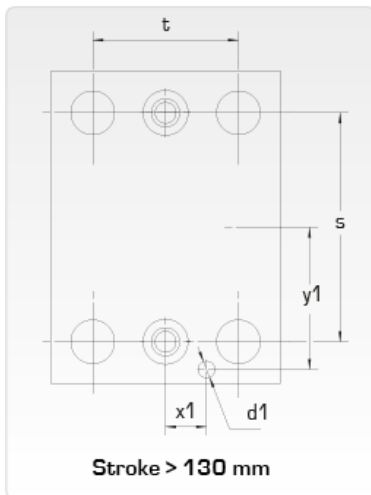
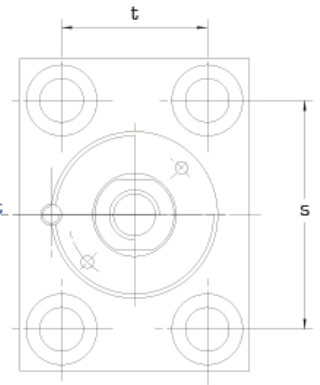
Hydraulic block
cylinders BDE

Stroke ≤ 130 mm

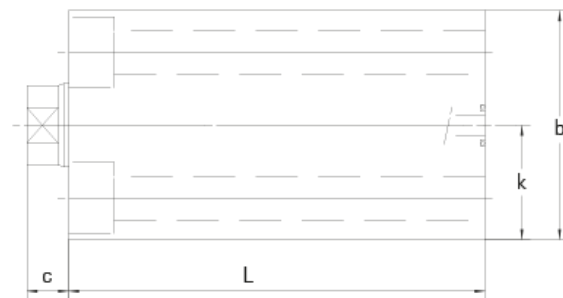


Rod goes in

Rod goes out.



Stroke > 130 mm



TYPE	Units	BDE 25	BDE 32	BDE 40	BDE 50	BDE 63	BDE 80	BDE 100	BDE 125
Piston ϕ	(mm)	25	32	40	50	63	80	100	125
Rod ϕ	(mm)	16	20	25	32	40	50	63	80
Pushing force at 100 bars	(kN)	4.9	8.0	12.5	19.6	31.1	50.2	78.5	122.7
Pulling force at 100 bars	(kN)	2.9	4.9	7.7	11.6	18.6	30.6	47.4	72.4
a	(mm)	65	75	85	100	125	160	200	230
b	(mm)	45	55	63	75	95	120	150	180
c	(mm)	7	10	10	10	14	14	15	16
g	(mm)	8.5	10.5	10.5	13	17	21	25	32
g1 x depth	(mm)	$\phi 14 \times 9$	$\phi 17 \times 11$	$\phi 17 \times 11$	$\phi 20 \times 13$	$\phi 25 \times 17$	$\phi 32 \times 21$	$\phi 38 \times 25$	$\phi 47 \times 30.5$
k	(mm)	22.5	27.5	31.5	37.5	47.5	60	75	90
s	(mm)	50	55	63	76	95	120	158	180
t	(mm)	30	35	40	45	65	80	108	130



Hydraulic block cylinders : BDE F3 Type

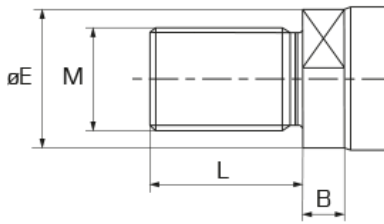
Test pressure: 500 bars
Max working pressure: 350 bars

øv	(mm)	4	5	5	6	8	8	8	8
øw x depth	(mm)	10.8 x 1.1	10.8 x 1.1	10.8 x 1.1	12.7 x 1.3	14.2 x 1.3	14.2 x 1.3	17.5 x 2	17.5 x 2
ød1 x depth	(mm)	3 x 6	3 x 6	5 x 10	6 x 10	8 x 10	10 x 10	10 x 15	12 x 15
x1	(mm)	8	9	10	11	15	18	25	28
y1	(mm)	29	33	37	44	55	70	90	102
TA	(mm)	M8 x 12	M10 x 15	M10 x 15	M12 x 18	M16 x 24	M20 x 30	M24 x 36	M30 x 45
Stroke(C) ≤ 130 mm									
Body length (L)	(mm)	C+44	C+50	C+54	C+65	C+72	C+85	C+90	C+110
Stroke(C) > 130 mm									
Body length (L)	(mm)	C+58.5	C+66	C+70	C+86	C+90	C+106	C+108	C+137
Maximum stroke	(mm)	200	250	300	350	350	400	400	400

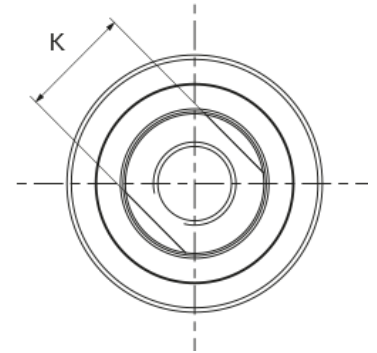
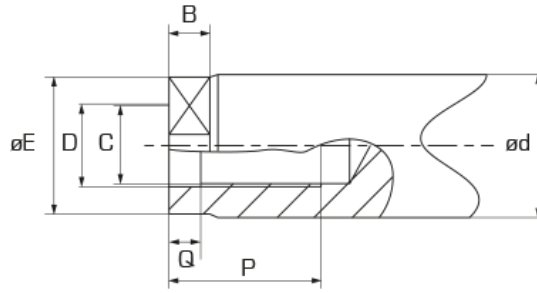
Hydraulic block cylinders BDE

Rod ends

Type F



Type T



TYPE	Units	BDE 25	BDE 32	BDE 40	BDE 50	BDE 63	BDE 80	BDE 100	BDE 125
ød	(mm)	16	20	25	32	40	50	63	80
B	(mm)	5.8	7.5	8.5	9	12.2	12	12	13
C	(mm)	M10 x 1.5	M12 x 1.75	M16 x 2	M20 x 2.5	M27 x 3	M30 x 3.5	M42 x 4.5	M48 x 5
øD	(mm)	10.5	12.5	16.5	21	28	31	43	49
øE	(mm)	15.2	19	24	31	39	49	61.5	78
K	(mm)	13	17	22	27	36	46	55	70
L	(mm)	18	22	28	36	45	52	60	64
M	(mm)	M14 x 1.5	M16 x 1.5	M20 x 1.5	M27 x 2	M33 x 2	M39 x 2	M45 x 2	M52 x 2
P	(mm)	18	18	25	30	40	40	60	70
Q	(mm)	4	4	7	7	10	10	10	10

Options

WARNING:

For cylinders of this type, with strokes >130mm, the 4 smooth mounting holes parallel to the rod are automatically replaced by 4 tapped holes (TA) on the feed face.



Hydraulic block cylinders : BDE F3 Type

Test pressure: 500 bars
Max working pressure: 350 bars

TYPE	Units	BDE 25	BDE 32	BDE 40	BDE 50	BDE 63	BDE 80	BDE 100	BDE 125
TA	(mm)	M8 x 12	M10 x 15	M10 x 15	M12 x 18	M16 x 24	M20 x 30	M24 x 36	M30 x 45
L	(mm)	8.5	10.5	10.5	13	17	21	25	32

Hydraulic block
cylinders BDE



Hydraulic block cylinders : BDE F4 Type

Test pressure: 500 bars
Max working pressure: 350 bars

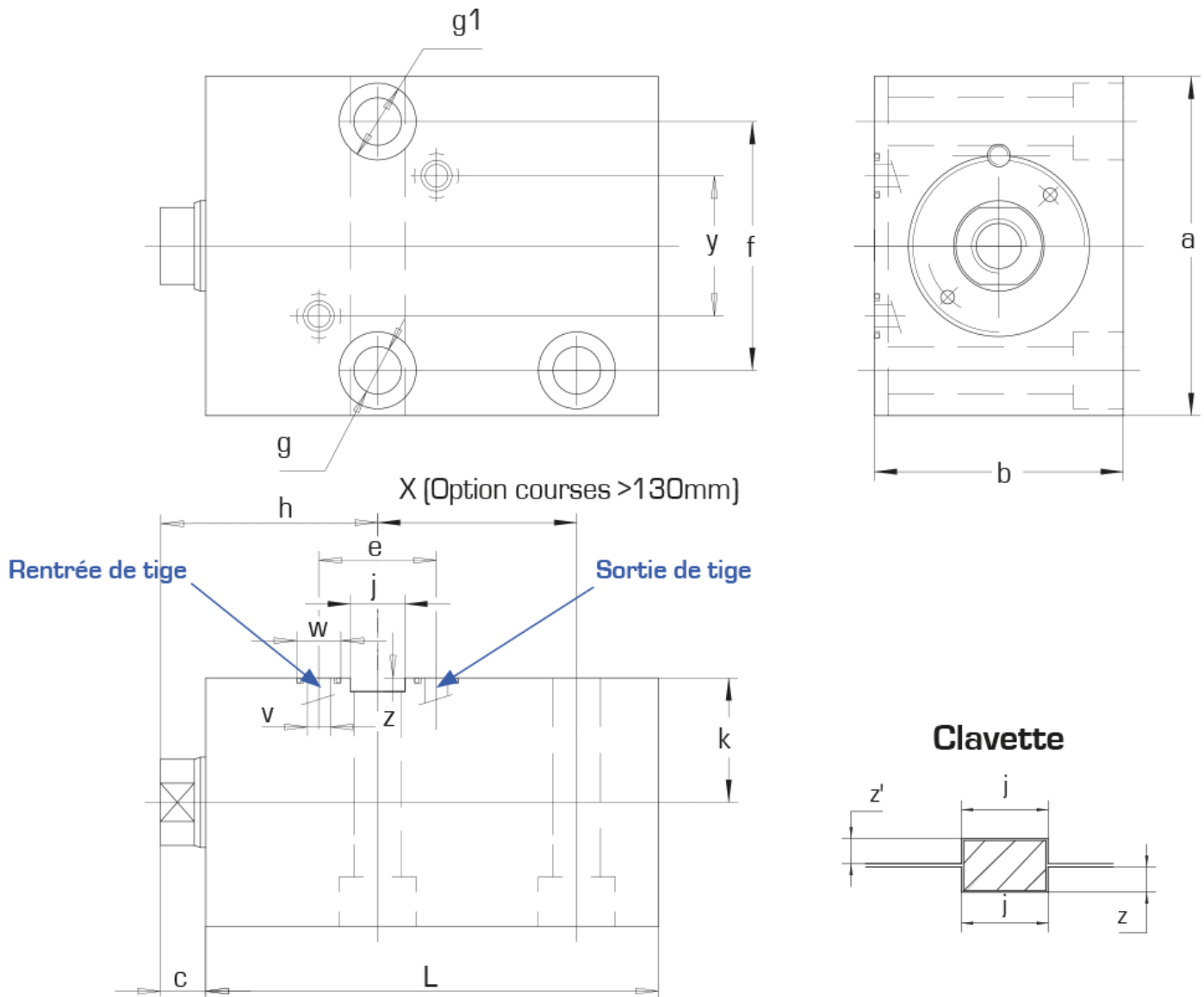
Feeding at the bottom and symmetrical to the keyway. Position of the keyway on demand.
Fixture perpendicular to the rod.
Key provided
Seals kit available on stock

Characteristics

Key groove (key provided)
Solid body, burnished bore
Solid piston rod
Strokes $\pm 0,3\text{mm}$
Guiding improved on piston and rod



Hydraulic block
cylinders BDE





Hydraulic block cylinders : BDE F4 Type

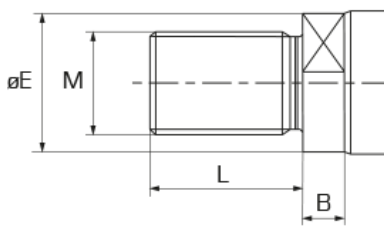
Test pressure: 500 bars
Max working pressure: 350 bars

Hydraulic block cylinders BDE

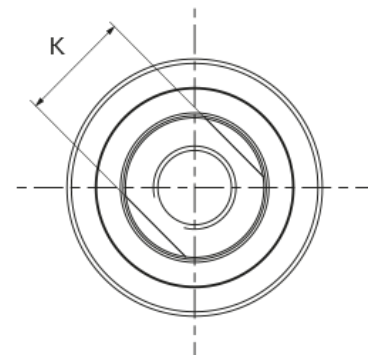
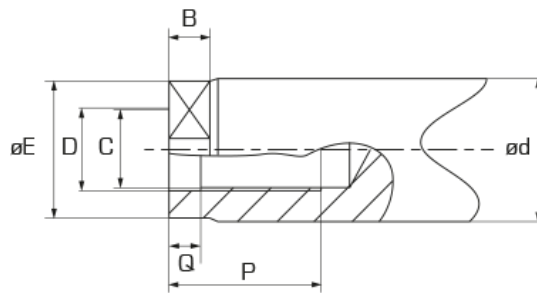
TYPE	Units	BDE 25	BDE 32	BDE 40	BDE 50	BDE 63	BDE 80	BDE 100	BDE 125
Piston ø	(mm)	25	32	40	50	63	80	100	125
Rod ø	(mm)	16	20	25	32	40	50	63	80
Pushing force at 100 bars	(kN)	4.9	8.0	12.5	19.6	31.1	50.2	78.5	122.7
Pulling force at 100 bars	(kN)	2.9	4.9	7.7	11.6	18.6	30.6	47.4	72.4
a	(mm)	65	75	85	100	125	160	200	230
b	(mm)	45	55	63	75	95	120	150	180
c	(mm)	7	10	10	10	14	14	15	16
e	(mm)	24	26	26	31	37	42	50	60
f	(mm)	50	55	63	76	95	120	158	180
g	(mm)	8.5	10.5	10.5	13	17	21	25	32
g1 x depth	(mm)	ø14 x 9	ø17 x 11	ø17 x 11	ø19 x 13	ø25 x 17	ø32 x 21	ø38 x 25	ø47 x 30.5
h mini	(mm)	40	48	50	54	64	74	79	98
j H8	(mm)	10	12	12	16	20	24	28	35
øv	(mm)	4	5	5	6	8	8	8	8
øw x depth	(mm)	10.8 x 1.1	10.8 x 1.1	10.8 x 1.1	12.7 x 1.3	14.2 x 1.3	14.2 x 1.3	17.5 x 2	17.5 x 2
y	(mm)	30	34	40	52	60	72	90	100
z	(mm)	2	3	4	5	6	7	8	9
z' (+0.1 0)	(mm)	6	5	4	5	6	7	8	9
Stroke(C) ≤ 130 mm									
Body length (L)	(mm)	C+44	C+50	C+54	C+65	C+72	C+85	C+90	C+110
Stroke(C) > 130 mm									
Body length (L)	(mm)	C+58.5	C+66	C+70	C+86	C+90	C+106	C+108	C+137
X (For stroke > 130mm)	(mm)	Au choix							
Maximum stroke	(mm)	200	250	300	350	350	400	400	400

Rod ends

Type F



Type T



TYPE	Units	BDE 25	BDE 32	BDE 40	BDE 50	BDE 63	BDE 80	BDE 100	BDE 125
ød	(mm)	16	20	25	32	40	50	63	80
B	(mm)	5.8	7.5	8.5	9	12.2	12	12	13
C	(mm)	M10 x 1.5	M12 x 1.75	M16 x 2	M20 x 2.5	M27 x 3	M30 x 3.5	M42 x 4.5	M48 x 5
øD	(mm)	10.5	12.5	16.5	21	28	31	43	49
øE	(mm)	15.2	19	24	31	39	49	61.5	78
K	(mm)	13	17	22	27	36	46	55	70
L	(mm)	18	22	28	36	45	52	60	64
M	(mm)	M14 x 1.5	M16 x 1.5	M20 x 1.5	M27 x 2	M33 x 2	M39 x 2	M45 x 2	M52 x 2
P	(mm)	18	18	25	30	40	40	60	70
Q	(mm)	4	4	7	7	10	10	10	10



Hydraulic block cylinders : BDE F4 Type

Test pressure: 500 bars
Max working pressure: 350 bars

Options

TYPE	Units	BDE 25	BDE 32	BDE 40	BDE 50	BDE 63	BDE 80	BDE 100	BDE 125
TA	(mm)	M8 x 12	M10 x 15	M10 x 15	M12 x 18	M16 x 24	M20 x 30	M24 x 36	M30 x 45
LI	(mm)	8.5	10.5	10.5	13	17	21	25	32



Hydraulic block cylinders : BDE P Type

Test pressure: 500 bars
Max working pressure: 350 bars

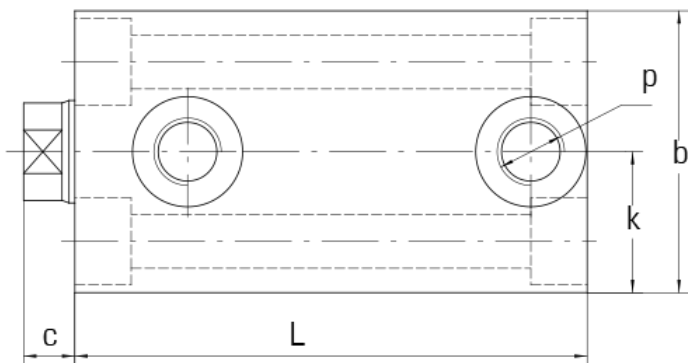
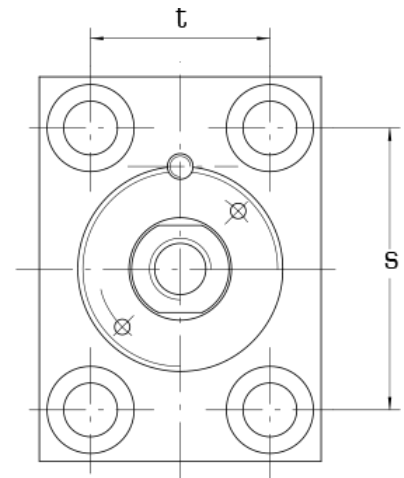
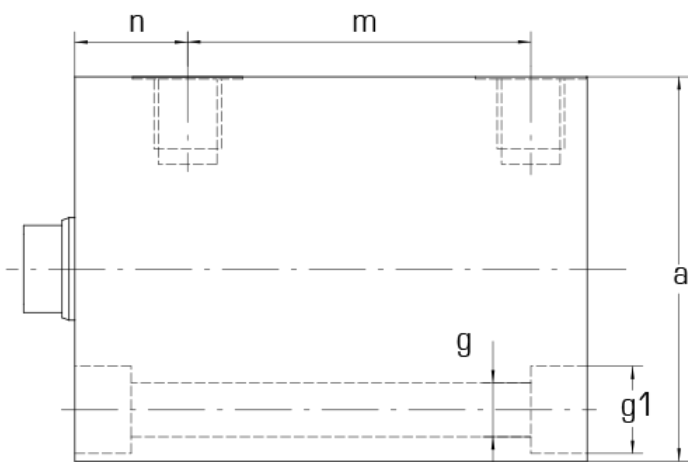
Tapped ports.
Fixture parallel to the rod.
Seals kits available on stock

Characteristics

Key groove (key provided)
Solid body, burnished bore
Solid piston rod
Strokes $\pm 0,3\text{mm}$
Guiding improved on piston and rod



Hydraulic block
cylinders BDE





Hydraulic block cylinders : BDE P Type

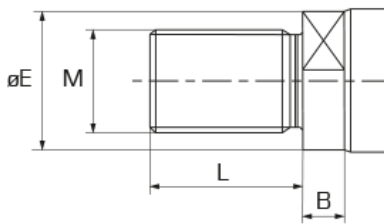
Test pressure: 500 bars
Max working pressure: 350 bars

Hydraulic block cylinders BDE

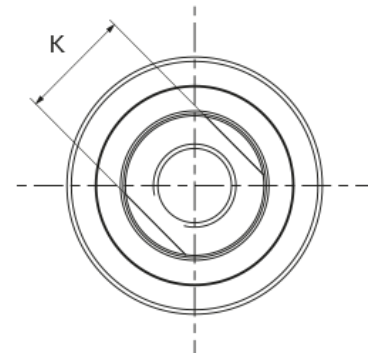
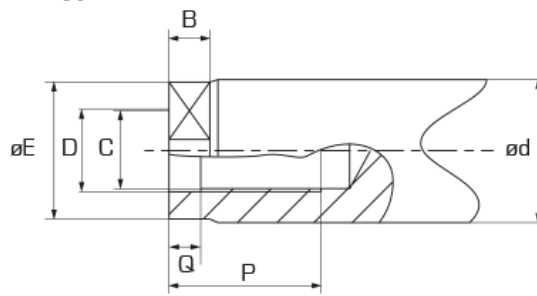
TYPE	Units	BDE 25	BDE 32	BDE 40	BDE 50	BDE 63	BDE 80	BDE 100	BDE 125
Piston ø	(mm)	25	32	40	50	63	80	100	125
Rod ø	(mm)	16	20	25	32	40	50	63	80
Pushing force at 100 bars	(kN)	4.9	8.0	12.5	19.6	31.1	50.2	78.5	122.7
Pulling force at 100 bars	(kN)	2.9	4.9	7.7	11.6	18.6	30.6	47.4	72.4
a	(mm)	65	75	85	100	125	160	200	230
b	(mm)	45	55	63	75	95	120	150	180
c	(mm)	7	10	10	10	14	14	15	16
g	(mm)	8.5	10.5	10.5	13	17	21	25	32
g1 x depth	(mm)	ø14 x 9	ø17 x 11	ø17 x 11	ø20 x 13	ø25 x 17	ø32 x 21	ø38 x 25	ø47 x 30.5
k	(mm)	22.5	27.5	31.5	37.5	47.5	60	75	90
n	(mm)	18	22	24	27	26	34	35	47
p		G1/4	G1/4	G1/4	G1/4	G1/2	G1/2	G1/2	G1/2
s	(mm)	50	55	63	76	95	120	158	180
t	(mm)	30	35	40	45	65	80	108	130
TA	(mm)	M8 x 12	M10 x 15	M10 x 15	M12 x 18	M16 x 24	M20 x 30	M24 x 36	M30 x 45
Stroke(C) ≤ 130 mm									
Body length (L)	(mm)	C+44	C+50	C+54	C+65	C+72	C+85	C+90	C+110
Between feeding holes (m)	(mm)	C+15	C+17	C+19	C+25	C+29	C+30	C+30	C+32
Stroke(C) > 130 mm									
Body length (L)	(mm)	C+58.5	C+66	C+70	C+86	C+90	C+106	C+108	C+137
Between feeding holes (m)	(mm)	C+18	C+20	C+22	C+28	C+33	C+34	C+34	C+36
Maximum stroke	(mm)	200	250	300	350	350	400	400	400

Rod ends

Type F



Type T



TYPE	Unité	BDE 25	BDE 32	BDE 40	BDE 50	BDE 63	BDE 80	BDE 100	BDE 125
ød	(mm)	16	20	25	32	40	50	63	80
B	(mm)	5,8	7,5	8,5	9	12,2	12	12	13
C	(mm)	M10 x 1,5	M12 x 1,75	M16 x 2	M20 x 2,5	M27 x 3	M30 x 3,5	M42 x 4,5	M48 x 5
øD	(mm)	10,5	12,5	16,5	21	28	31	43	49
øE	(mm)	15,2	19	24	31	39	49	61,5	78
K	(mm)	13	17	22	27	36	46	55	70
L	(mm)	18	22	28	36	45	52	60	64
M	(mm)	M14 x 1,5	M16 x 1,5	M20 x 1,5	M27 x 2	M33 x 2	M39 x 2	M45 x 2	M52 x 2
P	(mm)	18	18	25	30	40	40	60	70
Q	(mm)	4	4	7	7	10	10	10	10



Hydraulic block cylinders : BDE P Type

Test pressure: 500 bars
Max working pressure: 350 bars

Options

WARNING:

For cylinders of this type with strokes >130mm, the 4 smooth mounting holes parallel to the rod are automatically replaced by 4 tapped holes (TA) on both sides.

TYPE	Units	BDE 25	BDE 32	BDE 40	BDE 50	BDE 63	BDE 80	BDE 100	BDE 125
TA	(mm)	M8 x 12	M10 x 15	M10 x 15	M12 x 18	M16 x 24	M20 x 30	M24 x 36	M30 x 45
L	(mm)	8.5	10.5	10.5	13	17	21	25	32



Double acting hydraulic cylinders HVB

Catégorie

HVB FAA Double acting hydraulic cylinders HVB FAA

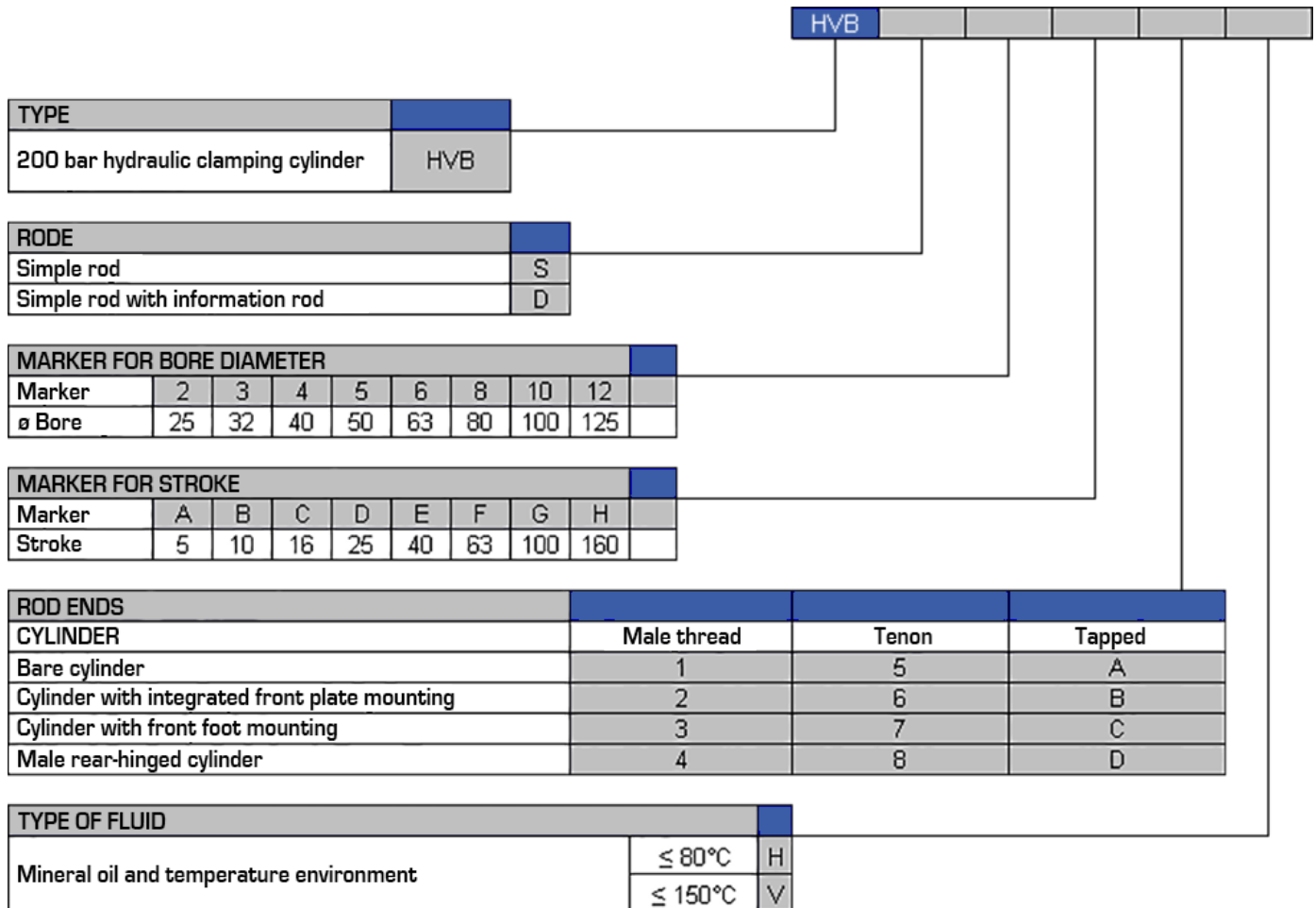
HVB FPA Double acting hydraulic cylinders HVB FPA

HVB FPAI Double acting hydraulic cylinders HVB FPAI

HVB FTT Double acting hydraulic cylinders HVB FTT

Hydraulic block
cylinders BDE

HVB designation



Double acting hydraulic cylinders HVB

Designation example: HVB S 06 F 2 V

Hydraulic clamping cylinder 200 bar, single rod, bore 63, stroke 63, integrated front plate mounting, male threaded rod end. Mineral oil and temperature environment ≤150°C.



Double acting hydraulic cylinders HVB FAA

(CNOMO type)

Operating pressure: 200 bar

Rear-hinged mounting.

Characteristics

Operating pressure :

Max. supply pressure: 200 bar

Test pressure: 315 bar

Permissible speed: Max. speed 5 m/min

Temperatures :

Minimum: -20°C

Maximum: +80°C with Standard seal, +150°C with Viton seal.

Fluids :

HM-HL hydraulic mineral oils 10 to 40 Cst at 50°C. Low flammability fluids class C or D

Filtration: <= 200 microns

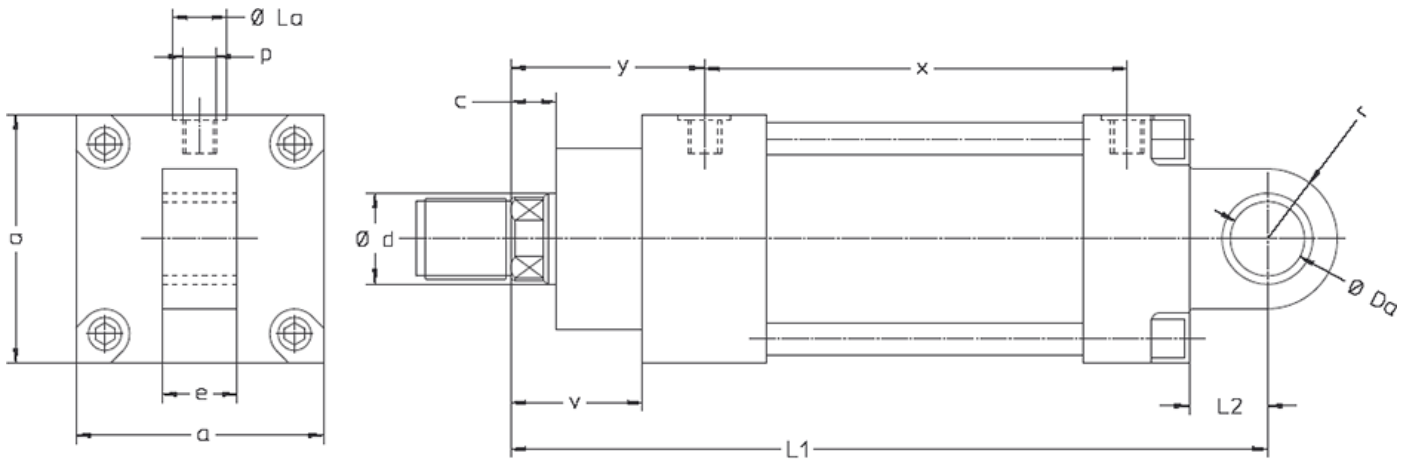
Connection: In BSPP cylindrical gas with counterbore for sealing ring.

Commissioning:

To ensure correct operation, air in both cylinder chambers should be purged by loosening the fittings, oil unpressurized. When the fluid is free of emulsion, retighten the fittings.



Double acting hydraulic cylinders HVB



Bore	Units	25	32	40	50	63	80	100	125
Ød (ø Rod)	(mm)	16	18	22	28	36	45	56	70
a	(mm)	45	56	63	75	85	106	125	160
p		G1/8	G1/8	G1/4	G1/4	G3/8	G3/8	G1/2	G1/2
e	(mm)	16	16	20	25	32	40	50	63
ØDa	(mm)	12	12	16	20	25	32	40	50
L2	(mm)	20	20	25	25	32	40	56	63
r	(mm)	14	14	16	20	25	32	40	50
x	(mm)	34	45	45	53	56	63	70	80
y	(mm)	46	48	55	57	71	74	81	93
v	(mm)	28	32	40	40	45	50	58	63
c	(mm)	12	12	15	12	17	18	20	23
L1	(mm)	112	122	140	150	177	192	233	261
v	(mm)	28	32	40	40	45	50	58	63
c	(mm)	12	12	15	12	17	18	20	23
L	(mm)	92	102	115	125	145	152	177	198

Strokes



Double acting hydraulic cylinders HVB FAA

(CNOMO type)

Operating pressure: 200 bar

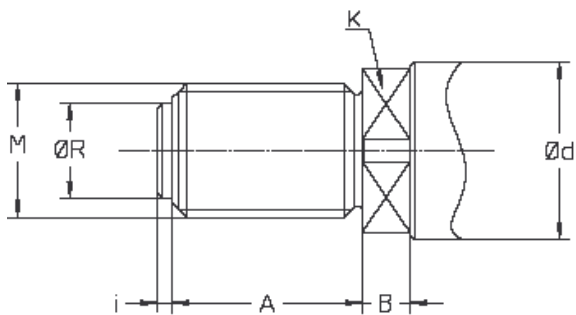
Rear-hinged mounting.

Bore		25	32	40	50	63	80	100	125
Stroke Tolerance+2 0	5	X	X	X	X	X	X	X	X
	10	X	X	X	X	X	X	X	X
	16	X	X	X	X	X	X	X	X
	25	X	X	X	X	X	X	X	X
	40	X	X	X	X	X	X	X	X
	63	X	X		X	X	X	X	X
	100		X	X	X	X	X	X	X
	160			X	X	X	X	X	X

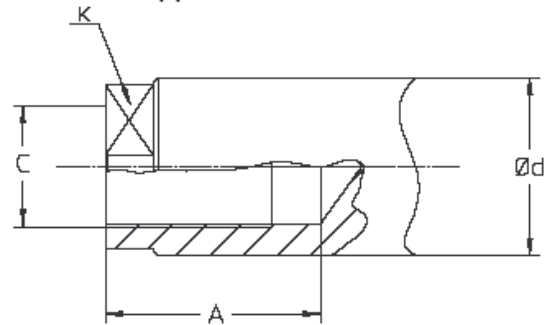
Double acting hydraulic cylinders HVB

Rod ends

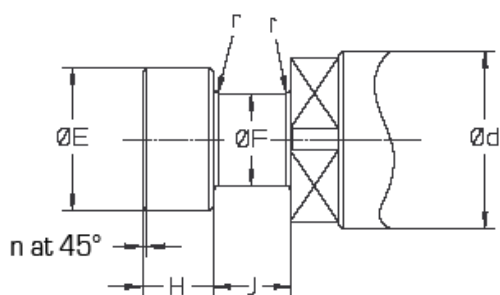
Threaded end



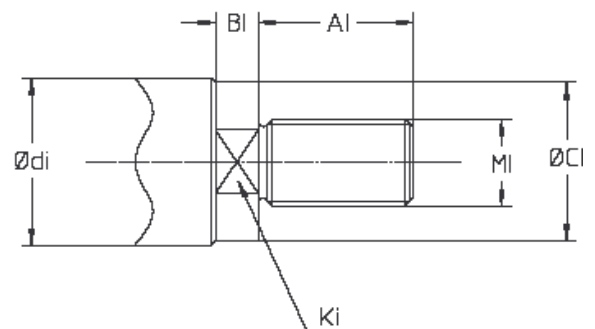
Tapped end



End with tenon



Information rod





Double acting hydraulic cylinders HVB FAA

(CNOMO type)

Operating pressure: 200 bar

Rear-hinged mounting.

Bore	Units	25	32	40	50	63	80	100	125
ød (ø Rod)	(mm)	16	18	22	28	36	45	56	70
ød / AI	(mm)	10	10	12	12	12	12	16	16
A	(mm)	20	20	25	32	40	50	63	80
øR	(mm)	9.5	9.5	13	17	23.5	29.5	38.5	48.5
øCl	(mm)	9.5	9.5	11.5	11.5	11.5	11.5	15	15
i	(mm)	2.5	2.5	3	3	3	4	5	5
M	(mm)	M12 x 1.25	M12 x 1.25	M16 x 1.5	M20 x 1.5	M27 x 2	M33 x 2	M42 x 2	M56 x 2
C	(mm)	M8 x 1.25	M8 x 1.25	M10 x 1.5	M16 x 1.5	M20 x 1.5	M27 x 2	M33 x 2	M42 x 2
MI	(mm)	M8 x 1.25	M8 x 1.25	M10 x 1.25	M10 x 1.5	M10 x 1.5	M10 x 1.5	M12 x 1.25	M12 x 1.25
n	(mm)	0.2	0.2	0.2	0.2	0.3	0.3	0.5	0.5
øE	(mm)	14	15	18	22.5	28	35.5	45	56
øF	(mm)	8	9	11.2	14	18	22.4	28	35.5
H/J	(mm)	6	6	8	10	12.5	16	20	25
r	(mm)	0.3	0.3	0.5	0.5	0.8	0.8	1.2	1.2
B	(mm)	8	8	8	8	12.5	12.5	14	14
BI	(mm)	5	5	6	6	6	6	8	8
K	(mm)	12	13	17	22	30	36	46	60
Ki	(mm)	8	8	10	10	10	10	13	13

Double acting hydraulic cylinders HVB



Double acting hydraulic cylinders HVB FPA

(CNOMO type)

Operating pressure: 200 bar

Front foot mounting.

Characteristics

Operating pressure :

Max. supply pressure: 200 bar

Test pressure: 315 bar

Permissible speed: Max. speed 5 m/min

Temperatures :

Minimum: -20°C

Maximum: +80°C with Standard seal, +150°C with Viton seal.

Fluids :

HM-HL hydraulic mineral oils 10 to 40 Cst at 50°C. Low flammability fluids class C or D

Filtration: \leq 200 microns

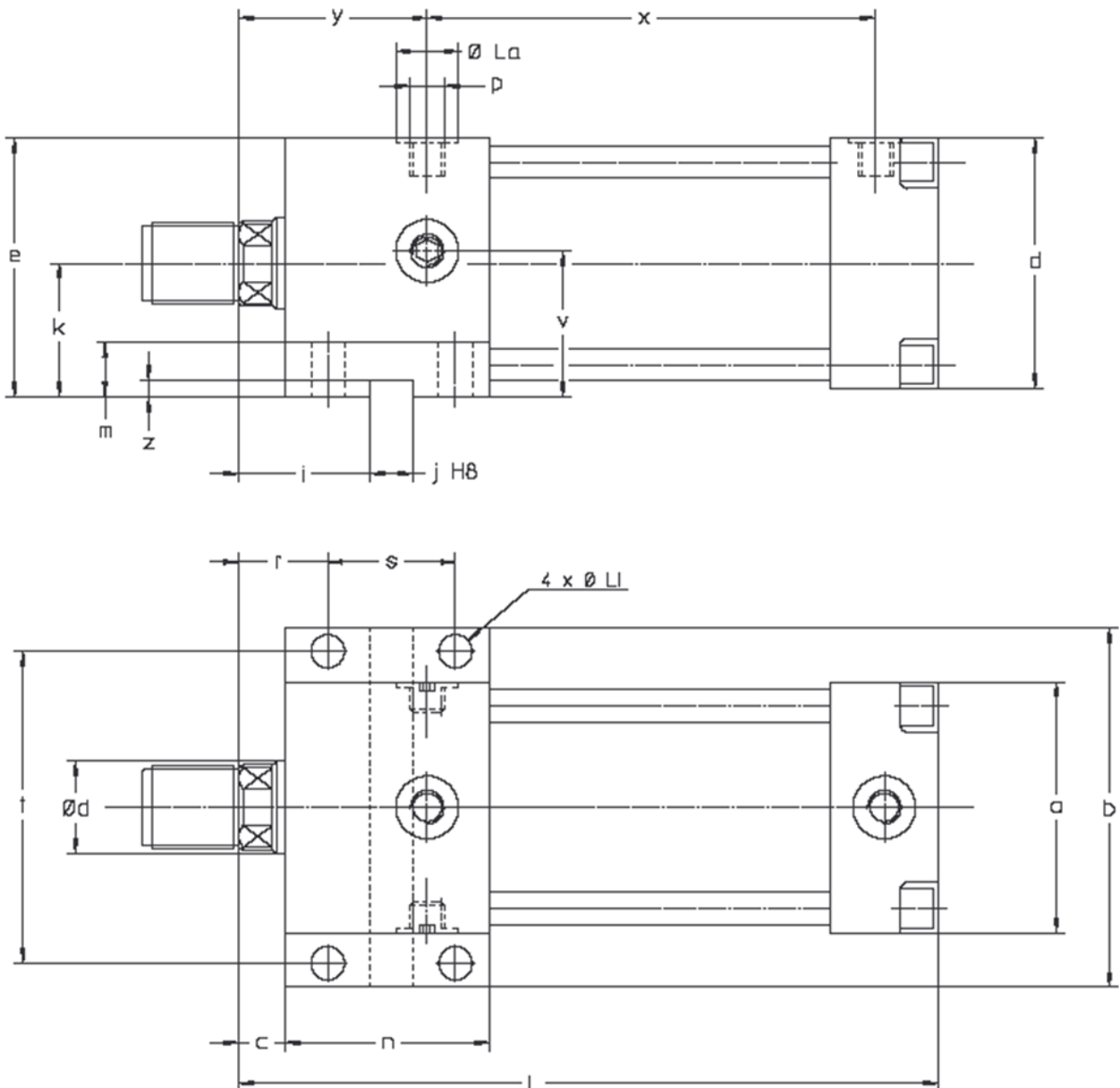
Connection: In BSPP cylindrical gas with counterbore for sealing ring.

Commissioning:

To ensure correct operation, air in both cylinder chambers should be purged by loosening the fittings, oil unpressurized. When the fluid is free of emulsion, retighten the fittings.



Double acting hydraulic cylinders HVB





Double acting hydraulic cylinders HVB FPA

(CNOMO type)

Operating pressure: 200 bar

Front foot mounting.

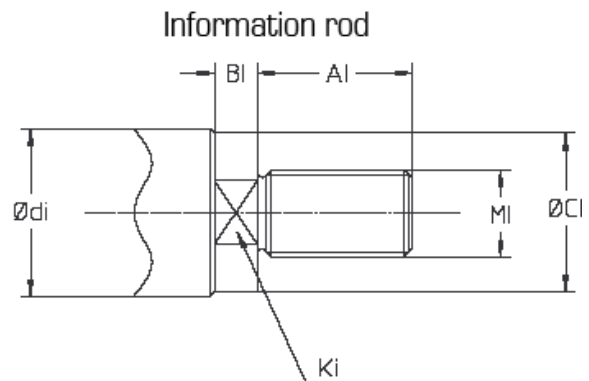
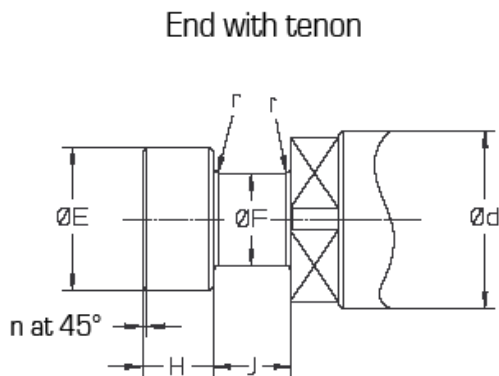
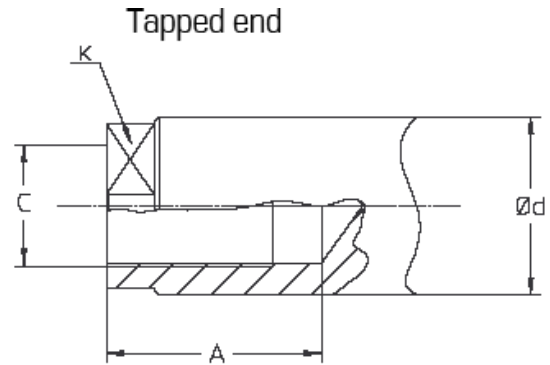
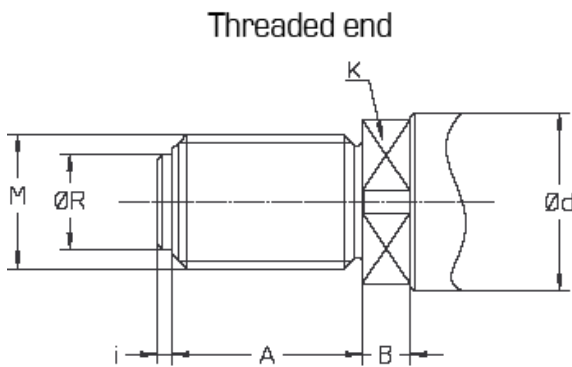
Bore	Units	25	32	40	50	63	80	100	125
ad (e Rod)	(mm)	16	18	22	28	36	45	56	70
a	(mm)	45	56	63	75	85	106	125	160
p		G1/8	G1/8	G1/4	G1/4	G3/8	G3/8	G1/2	G1/2
e	(mm)	47.5	59	67.5	80	87.5	109	129.5	162
øLa	(mm)	19	19	25	25	28	28	34	34
k	(mm)	25	31	36	42.5	45	56	67	82
v	(mm)	30	32	45	44.5	57	60	70	82
x	(mm)	34	45	45	53	56	63	70	80
øLi	(mm)	6.6	9	11	11	14	18	20	22
j HB	(mm)	12	12	12	12	16	16	16	20
z	(mm)	4	4	6	6	6	6	6	6
s	(mm)	32	32	36	40	45	50	56	63
n	(mm)	45	50	55	60	70	80	90	100
m	(mm)	12	12	20	20	25	25	32	36
t	(mm)	56	71	80	95	104	132	155	195
b	(mm)	70	86	100	115	124	160	185	230
r	(mm)	18.5	21	24.5	22	29.5	33	37	41.5
y	(mm)	46	48	55	57	71	74	81	93
L	(mm)	92	102	115	125	145	152	177	198
i	(mm)	28.5	31	36.5	36	44	50	57	63
c	(mm)	12	12	15	12	17	18	20	23

Double acting hydraulic cylinders HVB

Strokes

Bore		25	32	40	50	63	80	100	125
Stroke Tolerance+20	5	X	X	X	X	X	X	X	X
	10	X	X	X	X	X	X	X	X
	16	X	X	X	X	X	X	X	X
	25	X	X	X	X	X	X	X	X
	40	X	X	X	X	X	X	X	X
	63	X	X		X	X	X	X	X
	100		X	X	X	X	X	X	X
160			X	X	X	X	X	X	

Rod ends



Bore	Units	25	32	40	50	63	80	100	125
ød (ø Rod)	(mm)	16	18	22	28	36	45	56	70
ød / AI	(mm)	10	10	12	12	12	12	16	16
A	(mm)	20	20	25	32	40	50	63	80
øR	(mm)	9.5	9.5	13	17	23.5	29.5	38.5	48.5
øCl	(mm)	9.5	9.5	11.5	11.5	11.5	11.5	15	15
i	(mm)	2.5	2.5	3	3	3	4	5	5
M	(mm)	M12 x 1.25	M12 x 1.25	M16 x 1.5	M20 x 1.5	M27 x 2	M33 x 2	M42 x 2	M56 x 2
C	(mm)	M8 x 1.25	M8 x 1.25	M10 x 1.5	M16 x 1.5	M20 x 1.5	M27 x 2	M33 x 2	M42 x 2
MI	(mm)	M8 x 1.25	M8 x 1.25	M10 x 1.25	M10 x 1.5	M10 x 1.5	M10 x 1.5	M12 x 1.25	M12 x 1.25
n	(mm)	0.2	0.2	0.2	0.2	0.3	0.3	0.5	0.5
øE	(mm)	14	15	18	22.5	28	35.5	45	56
øF	(mm)	8	9	11.2	14	18	22.4	28	35.5
H/J	(mm)	6	6	8	10	12.5	16	20	25
r	(mm)	0.3	0.3	0.5	0.5	0.8	0.8	1.2	1.2
B	(mm)	8	8	8	8	12.5	12.5	14	14
BI	(mm)	5	5	6	6	6	6	8	8
K	(mm)	12	13	17	22	30	36	46	60
Ki	(mm)	8	8	10	10	10	10	13	13



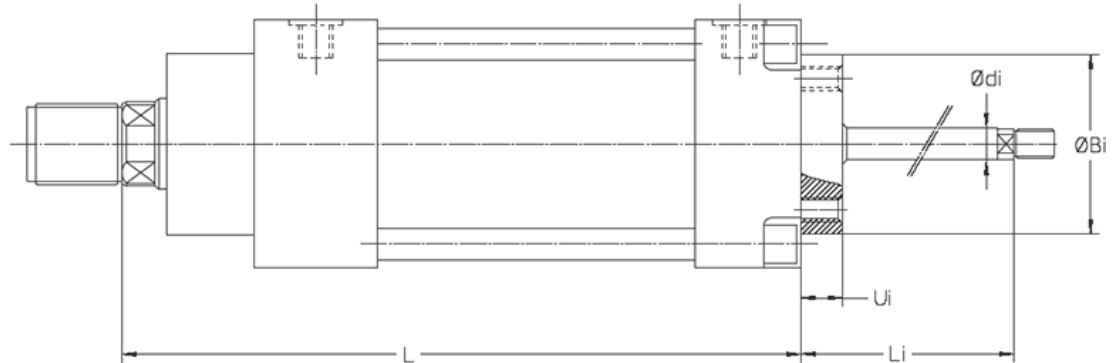
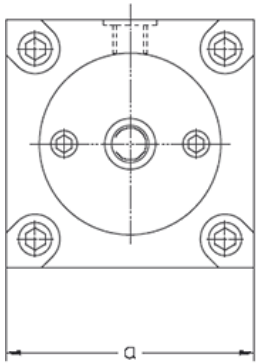
Double acting hydraulic cylinders HVB FPA

(CNOMO type)

Operating pressure: 200 bar

Front foot mounting.

Information rod



Double acting hydraulic cylinders HVB

Bore	Units	25	32	40	50	63	80	100	125
Ød (Ø Rod)	(mm)	16	18	22	28	36	45	56	70
a	(mm)	45	56	63	75	85	106	125	160
ØBi	(mm)	36	36	42	42	63	63	80	80
Ødi	(mm)	10	10	12	12	12	12	16	16
Ui	(mm)	8	8	12	12	12	12	15	15
Li	(mm)	20	20	32	32	32	32	35	35
L	(mm)	92	102	115	125	145	152	177	198



Double acting hydraulic cylinders HVB FPAI

(CNOMO type)

Operating pressure: 200 bar

Integrated front plate mounting.

Characteristics

Operating pressure :

Max. supply pressure: 200 bar

Test pressure: 315 bar

Permissible speed: Max. speed 5 m/min

Temperatures :

Minimum: -20°C

Maximum: +80°C with Standard seal, +150°C with Viton seal.

Fluids :

HM-HL hydraulic mineral oils 10 to 40 Cst at 50°C. Low flammability fluids class C or D

Filtration: <= 200 microns

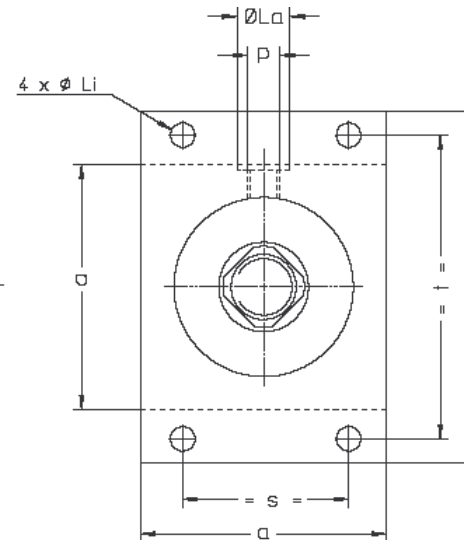
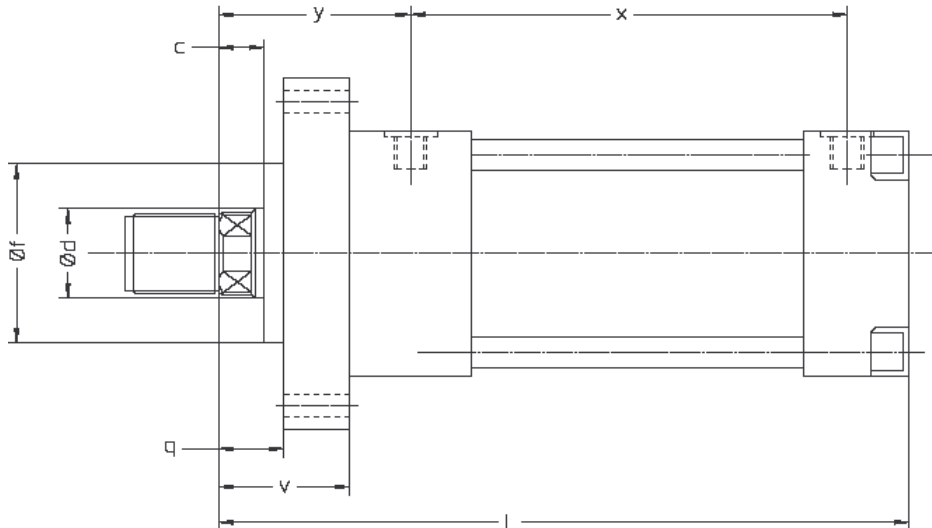
Connection: In BSSP cylindrical gas with counterbore for sealing ring.

Commissioning:

To ensure correct operation, air in both cylinder chambers should be purged by loosening the fittings, oil unpressurized. When the fluid is free of emulsion, retighten the fittings.



Double acting hydraulic cylinders HVB



Bore	Units	25	32	40	50	63	80	100	125
ød (ø Rod)	(mm)	16	18	22	28	36	45	56	70
øf	(mm)	36	40	45	56	63	80	100	125
a	(mm)	45	56	63	75	85	106	125	160
b	(mm)	70	86	100	115	124	160	185	230
p		G1/8	G1/8	G1/4	G1/4	G3/8	G3/8	G1/2	G1/2
øLi	(mm)	6.6	9	11	11	14	18	20	22
øLa	(mm)	19	19	25	25	28	28	34	34
x	(mm)	34	45	45	53	56	63	70	80
y	(mm)	46	48	55	57	71	74	81	93
s	(mm)	34	36	45	50	65	80	97.5	125
t	(mm)	56	71	80	95	104	132	155	195
q	(mm)	16	16	20	16	21	22	24	27
v	(mm)	28	32	40	40	45	50	58	63
c	(mm)	12	12	15	12	17	18	20	23
L	(mm)	92	102	115	125	145	152	177	198



Double acting hydraulic cylinders HVB FPAI

(CNOMO type)

Operating pressure: 200 bar

Integrated front plate mounting.

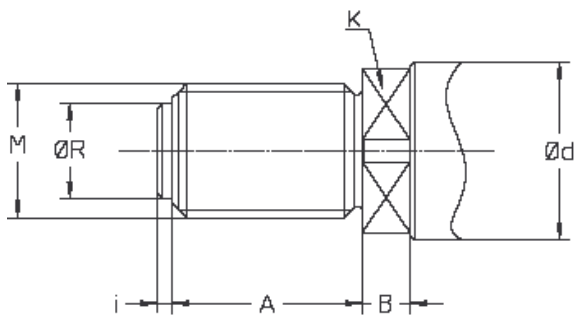
Strokes

Bore		25	32	40	50	63	80	100	125
Stroke Tolerance+2 0	5	X	X	X	X	X	X	X	X
	10	X	X	X	X	X	X	X	X
	16	X	X	X	X	X	X	X	X
	25	X	X	X	X	X	X	X	X
	40	X	X	X	X	X	X	X	X
	63	X	X		X	X	X	X	X
	100		X	X	X	X	X	X	X
	160			X	X	X	X	X	X

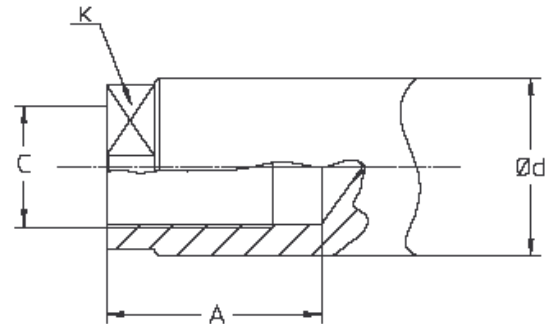
Double acting hydraulic cylinders HVB

Rod ends

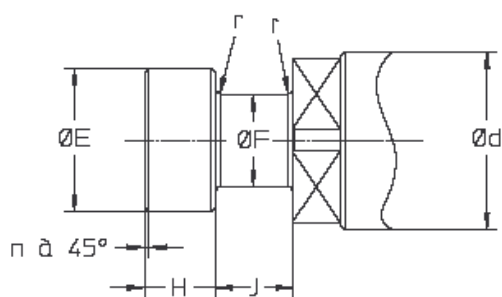
Extrémité fileté



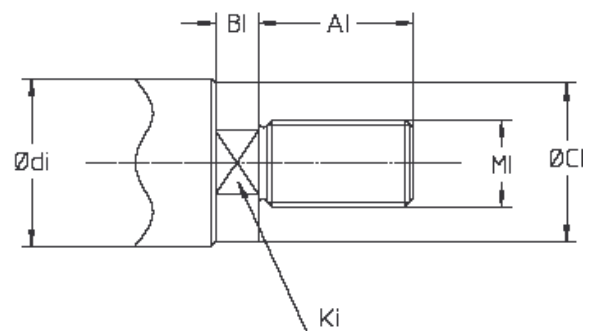
Tige taraudée



Extrémité tenon



Tige d'information





Double acting hydraulic cylinders HVB FPAI

(CNOMO type)

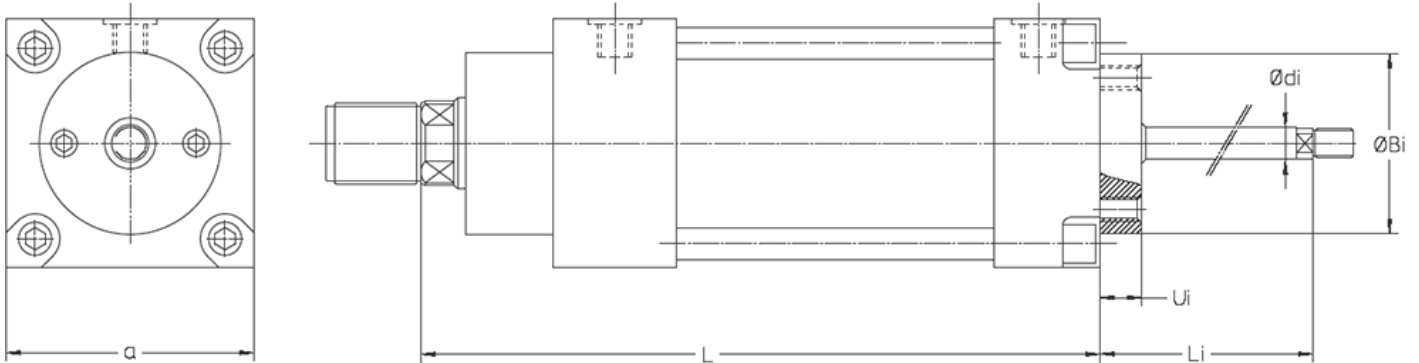
Operating pressure: 200 bar

Integrated front plate mounting.

Double acting hydraulic cylinders HVB

Bore	Units	25	32	40	50	63	80	100	125
ad (ø Rod)	(mm)	16	18	22	28	36	45	56	70
ad / AI	(mm)	10	10	12	12	12	12	16	16
A	(mm)	20	20	25	32	40	50	63	80
øR	(mm)	9.5	9.5	13	17	23.5	29.5	38.5	48.5
øCl	(mm)	9.5	9.5	11.5	11.5	11.5	11.5	15	15
i	(mm)	2.5	2.5	3	3	3	4	5	5
M	(mm)	M12 x 1.25	M12 x 1.25	M16 x 1.5	M20 x 1.5	M27 x 2	M33 x 2	M42 x 2	M56 x 2
C	(mm)	M8 x 1.25	M8 x 1.25	M10 x 1.5	M16 x 1.5	M20 x 1.5	M27 x 2	M33 x 2	M42 x 2
MI	(mm)	M8 x 1.25	M8 x 1.25	M10 x 1.25	M10 x 1.5	M10 x 1.5	M10 x 1.5	M12 x 1.25	M12 x 1.25
n	(mm)	0.2	0.2	0.2	0.2	0.3	0.3	0.5	0.5
øE	(mm)	14	15	18	22.5	28	35.5	45	56
øF	(mm)	8	9	11.2	14	18	22.4	28	35.5
H/J	(mm)	6	6	8	10	12.5	16	20	25
r	(mm)	0.3	0.3	0.5	0.5	0.8	0.8	1.2	1.2
B	(mm)	8	8	8	8	12.5	12.5	14	14
BI	(mm)	5	5	6	6	6	6	8	8
K	(mm)	12	13	17	22	30	36	46	60
Ki	(mm)	8	8	10	10	10	10	13	13

Information rod



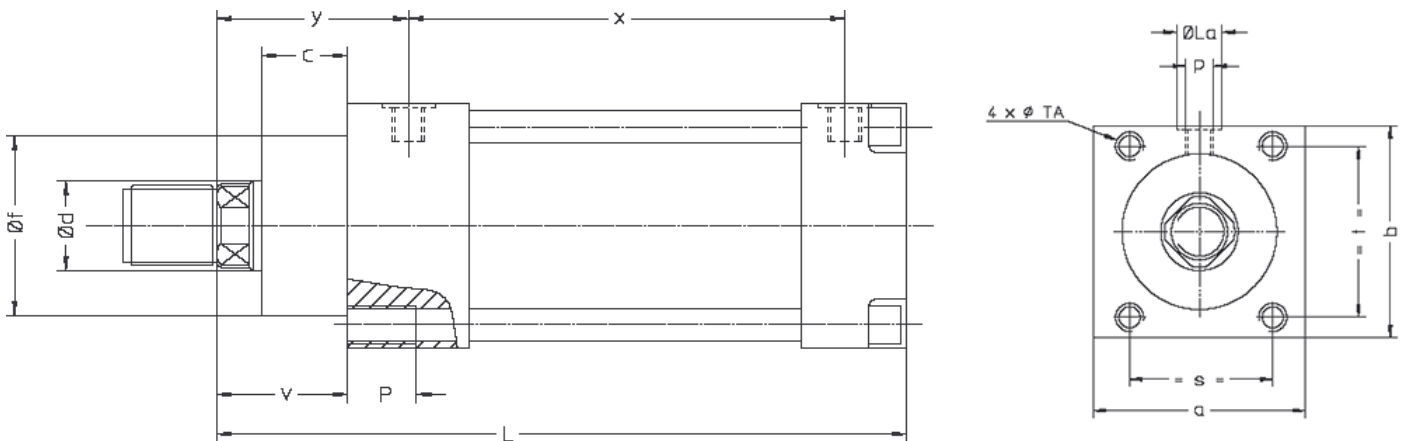
Bore	Units	25	32	40	50	63	80	100	125
ad (ø Rod)	(mm)	16	18	22	28	36	45	56	70
a	(mm)	45	56	63	75	85	106	125	160
øBi	(mm)	36	36	42	42	63	63	80	80
ødi	(mm)	10	10	12	12	12	12	16	16
Ui	(mm)	8	8	12	12	12	12	15	15
Li	(mm)	20	20	32	32	32	32	35	35
L	(mm)	92	102	115	125	145	152	177	198

Characteristics

Operating pressure :
 Max. supply pressure: 200 bar
 Test pressure: 315 bar
 Permissible speed: Max. speed 5 m/min
 Temperatures :
 Minimum: -20°C
 Maximum: +80°C with Standard seal, +150°C with Viton seal.
 Fluids :
 HM-HL hydraulic mineral oils 10 to 40 Cst at 50°C. Low flammability fluids class C or D
 Filtration: <= 200 microns
 Connection: In BSSP cylindrical gas with counterbore for sealing ring.
 Commissioning:
 To ensure correct operation, air in both cylinder chambers should be purged by loosening the fittings, oil unpressurized. When the fluid is free of emulsion, retighten the fittings.



Double acting hydraulic cylinders HVB



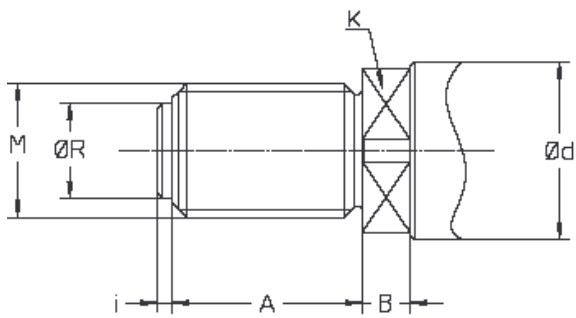
Bore	Units	25	32	40	50	63	80	100	125
$\varnothing d$ (e Rod)	(mm)	16	18	22	28	36	45	56	70
$\varnothing f$	(mm)	36	40	45	56	63	80	100	125
P	(mm)	12	12	12	12	18	18	24	24
b	(mm)	45	56	63	75	85	106	125	160
p		G1/8	G1/8	G1/4	G1/4	G3/8	G3/8	G1/2	G1/2
$\varnothing La$	(mm)	19	19	25	25	28	28	34	34
x	(mm)	34	45	45	53	56	63	70	80
TA		M6	M8	M10	M10	M12	M16	M18	M20
s	(mm)	34	42	45	56	65	80	97.5	125
t	(mm)	34	42	45	56	65	80	97.5	125
c	(mm)	16	20	25	28	28	32	38	40
v	(mm)	28	32	40	40	45	50	58	63
y	(mm)	46	48	55	57	71	74	81	93
L	(mm)	92	102	115	125	145	152	177	198

Strokes

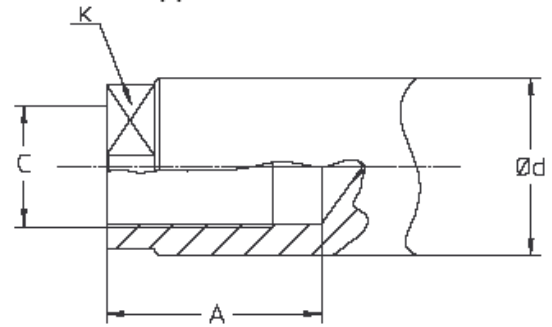
Bore		25	32	40	50	63	80	100	125
Stroke Tolerance+2 0	5	X	X	X	X	X	X	X	X
	10	X	X	X	X	X	X	X	X
	16	X	X	X	X	X	X	X	X
	25	X	X	X	X	X	X	X	X
	40	X	X	X	X	X	X	X	X
	63	X	X		X	X	X	X	X
	100		X	X	X	X	X	X	X
	160			X	X	X	X	X	X

Rod ends

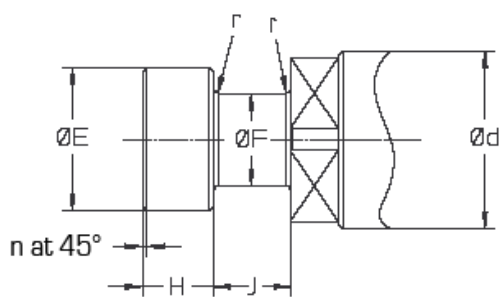
Threaded end



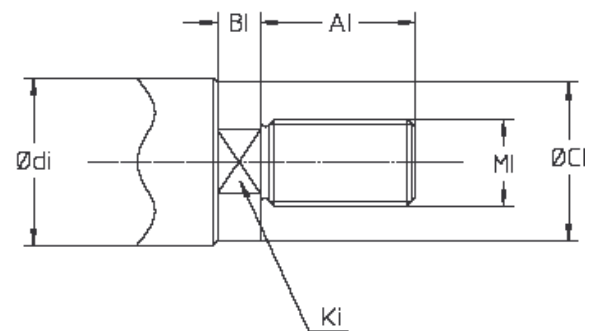
Tapped end



End with tenon

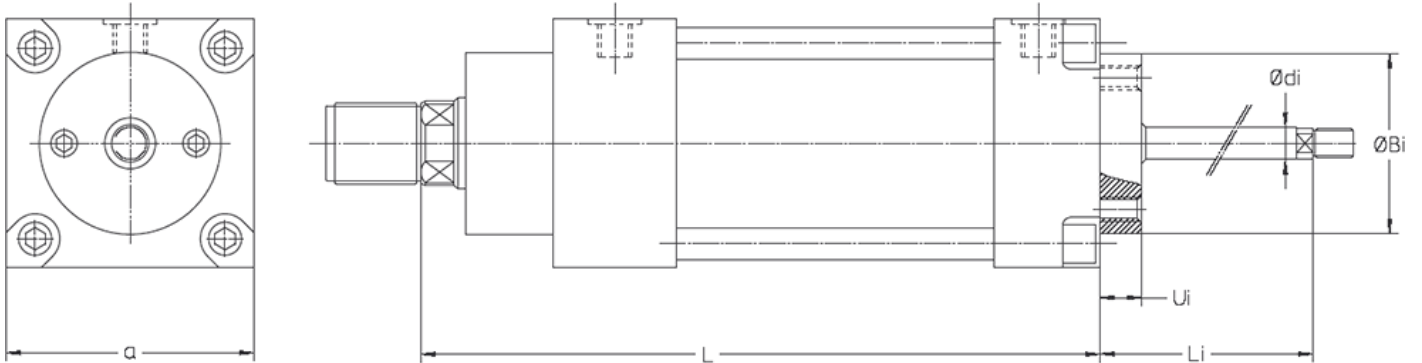


Information rod



Bore	Units	25	32	40	50	63	80	100	125
ød (ø Rod)	(mm)	16	18	22	28	36	45	56	70
ød / AI	(mm)	10	10	12	12	12	12	16	16
A	(mm)	20	20	25	32	40	50	63	80
øR	(mm)	9.5	9.5	13	17	23.5	29.5	38.5	48.5
øCl	(mm)	9.5	9.5	11.5	11.5	11.5	11.5	15	15
i	(mm)	2.5	2.5	3	3	3	4	5	5
M	(mm)	M12 x 1.25	M12 x 1.25	M16 x 1.5	M20 x 1.5	M27 x 2	M33 x 2	M42 x 2	M56 x 2
C	(mm)	M8 x 1.25	M8 x 1.25	M10 x 1.5	M16 x 1.5	M20 x 1.5	M27 x 2	M33 x 2	M42 x 2
MI	(mm)	M8 x 1.25	M8 x 1.25	M10 x 1.25	M10 x 1.5	M10 x 1.5	M10 x 1.5	M12 x 1.25	M12 x 1.25
n	(mm)	0.2	0.2	0.2	0.2	0.3	0.3	0.5	0.5
øE	(mm)	14	15	18	22.5	28	35.5	45	56
øF	(mm)	8	9	11.2	14	18	22.4	28	35.5
H/J	(mm)	6	6	8	10	12.5	16	20	25
r	(mm)	0.3	0.3	0.5	0.5	0.8	0.8	1.2	1.2
B	(mm)	8	8	8	8	12.5	12.5	14	14
BI	(mm)	5	5	6	6	6	6	8	8
K	(mm)	12	13	17	22	30	36	46	60
Ki	(mm)	8	8	10	10	10	10	13	13

Information rod



Bore	Units	25	32	40	50	63	80	100	125
ød (ø Rod)	(mm)	16	18	22	28	36	45	56	70
a	(mm)	45	56	63	75	85	106	125	160
øBi	(mm)	36	36	42	42	63	63	80	80
ødi	(mm)	10	10	12	12	12	12	16	16
Ui	(mm)	8	8	12	12	12	12	15	15
Li	(mm)	20	20	32	32	32	32	35	35
L	(mm)	92	102	115	125	145	152	177	198



QUIRI Factorys and Co. na całym świecie
QUIRI & Co. Fabryki Firma na całym świecie



QUIRI HYDROMECHANICS
F - 67120 DUTTLENHEIM
Tel.: 0033 3 88 04 84 00
Faks: 0033 3 88 04 84 01
quiri.hydro@quiri.com
www.quiri.com

QUIRI MICROMAT
D - 71277 RUTESHEIM
quiri.hydro@quiri.com
www.quiri.com



ZASTAW
TR - IZMIR
quiri.hydro@quiri.com
www.quiri.com

QUIRI CHINY
Pan Ding Shan Zhi
Telefon biurowy z Chin: 0411 847 958 69
Telefon służbowy z zagranicy: +86 411847 958 69
Adres: nr 18, Ren Xian Road, strefa przemysłowa He Kou,
strefa high-tech, Dalian, Liao Ning, Chiny



QUIRI HYDROMECHANIQUE

6, rue Denis Papin

DUTTLENHEIM

67129 MOLSHEIM - Cedex

FRANCE

Tél. : **+33 (0)3 88 04 84 00**

Fax. : **+33 (0)3 88 04 84 01**

Email : quiri.hydro@quiri.com



UNION EUROPÉENNE

Fonds Européen de Développement Régional